

Anti-BMI1 antibody (120-326) (STJ115433)

GENERAL INFORMATION

Product Type	Primary antibodies
Applications	WB/IF/ICC/ELISA
Host / Source	Rabbit
Reactivity	Human

PRODUCT PROPERTIES

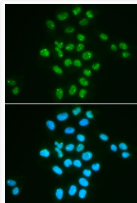
Clonality	Polyclonal
Concentration	Lot specific
Conjugation	Unconjugated
Purification	Affinity purification
Dilution Range	WB:1:500-1:2000 IF/CC:1:50-1:200 ELISA:Recommended starting concentration is 1 Mu g/mL. Please optimize the concentration based on your specific assay requirements.
Formulation	PBS with 0.02% Sodium Azide, 50% Glycerol, pH 7.3.
Isotype	IgG
Molecular Weight	Protein Mw: 37kDa Observed Mw: 41kDa
Storage Instruction	Store at -20°C for up to 1 year from the date of receipt, and avoid repeat freeze-thaw cycles.

TARGET INFORMATION

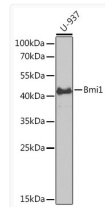
Gene ID	100532731/648
Gene Symbol	BMI1
UniProt ID	BMI1_HUMAN
Immunogen Region	120-326
Immunogen Sequence	EDKRITDDEIISLSIEFFD QNRLDRKVNKDKEKSKEEVN DKRYLRCPAAMTMVHLRKFL RSKMDIPNTFQIDVMYEEEP LKDYYTLMDIYIYTWRNG PLPLKYRVRPTCKRMKISHQ RDGLTNAGELESDSGSDKAN SPAGGIPSTSSCLPSPSTPV QSPHPQFPHISSTMNGTSNS PSGNHQSSFANRPRKSSVNG SSATSSG
Specificity	Recombinant fusion protein containing a sequence corresponding to amino acids 120-326 of human Bmi1 (NP_005171.4).

ADDITIONAL INFORMATION

Note **STRICTLY FOR FURTHER SCIENTIFIC RESEARCH USE ONLY (RUO). MUST NOT TO BE USED IN DIAGNOSTIC OR THERAPEUTIC APPLICATIONS.**



Immunofluorescence analysis of HeLa cells using Bmi1 antibody (STJ115433). Blue: DAPI for nuclear staining.



Western blot analysis of extracts of U-937 cells, using Bmi1 antibody (STJ115433) at 1:1000 dilution. _Secondary antibody: HRP Goat Anti-Rabbit IgG (H+L) (STJS000856) at 1:10000 dilution. _Lysates/proteins: 25 Mu g per lane. _Blocking buffer: 3% nonfat dry milk in TBST. _Detection: ECL Enhanced Kit. _Exposure time: 30s.