

Anti-ADH5 antibody (1-374) (STJ115420)

GENERAL INFORMATION

Product Type	Primary antibodies
Applications	WB/IF/ICC/ELISA
Host / Source	Rabbit
Reactivity	Human/Mouse/Rat

PRODUCT PROPERTIES

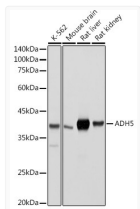
Clonality	Polyclonal
Concentration	Lot specific
Conjugation	Unconjugated
Purification	Affinity purification
Dilution Range	WB:1:500-1:1000 IF/CC:1:50-1:200 ELISA:Recommended starting concentration is 1 μ g/mL. Please optimize the concentration based on your specific assay requirements.
Formulation	PBS with 0.02% Sodium Azide, 50% Glycerol, pH 7.3.
Isotype	IgG
Molecular Weight	Protein Mw: 40kDa Observed Mw: 40kDa
Storage Instruction	Store at -20°C for up to 1 year from the date of receipt, and avoid repeat freeze-thaw cycles.

TARGET INFORMATION

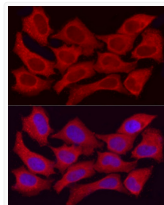
Gene ID	128
Gene Symbol	ADH5
UniProt ID	ADHX_HUMAN
Immunogen Region	1-374
Immunogen Sequence	MANEVIKCKAAVAWEAGKPL SIEEIEVAPPKAHEVRIKII ATAVCHTDAYTLSGADPEGC FPVILGHEGAGIVESVGEV TKLKAGDTVIPLYIPQCCEC KFCLNPKTNLCQKIRVTQGK GLMPDGTSRFTCKGKILHY MGTSTFSEYTVVADISVAKI DPLAPLDKVCLLGCGISTGY GAAVNTAKLEPGSVCAVFL GGVGLAVIMGCKVAGASRII GVDINKDKFARAKEFGATE
Specificity	Recombinant fusion protein containing a sequence corresponding to amino acids 1-374 of human ADH5/GSNOR (NP_000662.3).

ADDITIONAL INFORMATION

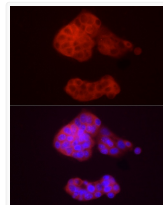
Note STRICTLY FOR FURTHER SCIENTIFIC RESEARCH USE ONLY (RUO). MUST NOT TO BE USED IN DIAGNOSTIC OR THERAPEUTIC APPLICATIONS.



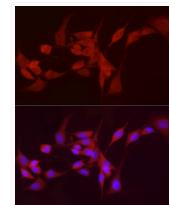
Western blot analysis of extracts of various cell lines, using ADH5/GSNOR antibody (STJ115420) at 1:500 dilution. Secondary antibody: HRP Goat Anti-rabbit IgG (H+L) (STJS000856) at 1:10000 dilution. Lysates/proteins: 25 μ g per lane. Blocking buffer: 3% non-fat dry milk in TBST. Detection: ECL Basic Kit. Exposure time: 1s.



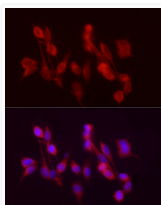
Immunofluorescence analysis of HeLa cells using ADH5/GSNOR rabbit polyclonal antibody (STJ115420) at dilution of 1:50 (40x lens). Blue: DAPI for nuclear staining.



Immunofluorescence analysis of HepG2 cells using ADH5/GSNOR rabbit polyclonal antibody (STJ115420) at dilution of 1:50 (40x lens). Blue: DAPI for nuclear staining.



Immunofluorescence analysis of NIH/3T3 cells using ADH5/GSNOR rabbit polyclonal antibody (STJ115420) at dilution of 1:50 (40x lens). Blue: DAPI for nuclear staining.



Immunofluorescence analysis of PC-12 cells using ADH5/GSNOR rabbit polyclonal antibody (STJ115420) at dilution of 1:50 (40x lens). Blue: DAPI for nuclear staining.