

Anti-RBBP7 antibody (1-230) (STJ115417)

GENERAL INFORMATION

| | |
|---------------|----------------------------|
| Product Type | Primary antibodies |
| Applications | WB/IHC-P/IF/ICC/ELISA/ChIP |
| Host / Source | Rabbit |
| Reactivity | Human/Mouse/Rat |

PRODUCT PROPERTIES

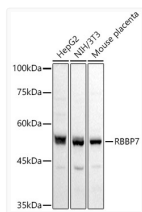
| | |
|---------------------|--------------------------------------------------------------------------------------------------------------------------------------------------------------------------------------------------------------------------------------------------------|
| Clonality | Polyclonal |
| Concentration | Lot specific |
| Conjugation | Unconjugated |
| Purification | Affinity purification |
| Dilution Range | WB:1:500-1:1000 IHC-P:1:50-1:200 IF/ICC:1:50-1:200 ELISA:Recommended starting concentration is 1 Mu g/mL. Please optimize the concentration based on your specific assay requirements. ChIP:5 Mu g antibody for 10 Mu g-15 Mu g of Chromat |
| Formulation | PBS with 0.05% Proclin300, 50% Glycerol, pH 7.3. |
| Isotype | IgG |
| Molecular Weight | Protein Mw: 48kDa Observed Mw: 48kDa |
| Storage Instruction | Store at -20°C for up to 1 year from the date of receipt, and avoid repeat freeze-thaw cycles. |

TARGET INFORMATION

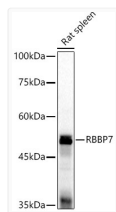
| | |
|--------------------|-----------------------------------------------------------------------------------------------------------------------------------------------------------------------------------------------------------------------------------------------|
| Gene ID | 5931 |
| Gene Symbol | RBBP7 |
| UniProt ID | RBBP7_HUMAN |
| Immunogen Region | 1-230 |
| Immunogen Sequence | MASKEMFEDTVEERVINEEY KIWKKNTPFYLDVLMTHALQ WPSLTQVWLPEVTKPEGKDY ALHWLVLGTHTSDEQNHLV ARVHIPNDDAQFDASHCDS KGEFGGFGSVTGKIECEIKI NHEGEVNRARYMPQNPPIIA TKTSSDVLVFDYTKHPAKP DPSGECNPDRLRGRHQKEGY GLSWNSNLGSHLLSASDDHT VCLWDINAGPKEGKIVDAKA IFTGHSVVE |
| Specificity | Recombinant fusion protein containing a sequence corresponding to amino acids 1-230 of human RbAp46/RBBP7 (NP_002884.1). |

ADDITIONAL INFORMATION

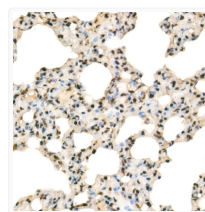
Note **STRICTLY FOR FURTHER SCIENTIFIC RESEARCH USE ONLY (RUO). MUST NOT TO BE USED IN DIAGNOSTIC OR THERAPEUTIC APPLICATIONS.**



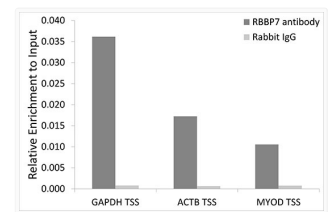
Western blot analysis of extracts of various cell lines, using RbAp46/RBBP7 antibody (STJ115417) at 1:500 dilution. Secondary antibody: HRP Goat Anti-rabbit IgG (H+L) (STJS000856) at 1:10000 dilution. Lysates/proteins: 25 Mu g per lane. Blocking buffer: 3% non-fat dry milk in TBST. Detection: ECL Basic Kit. Exposure time: 3s.



Western blot analysis of extracts of Rat spleen, using RbAp46/RBBP7 antibody (STJ115417) at 1:500 dilution. Secondary antibody: HRP Goat Anti-rabbit IgG (H+L) (STJS000856) at 1:10000 dilution. Lysates/proteins: 25 Mu g per lane. Blocking buffer: 3% non-fat dry milk in TBST. Detection: ECL Basic Kit. Exposure time: 30s.



Immunohistochemistry analysis of paraffin-embedded rat lung using RbAp46/RBBP7 rabbit polyclonal antibody (STJ115417) at dilution of 1:100 (40x lens). Perform high pressure antigen retrieval with 10 mM citrate buffer pH 6.0 before commencing with immunohistochemistry staining protocol.



Chromatin immunoprecipitation analysis of extracts of 293T cells, using RbAp46/RBBP7 antibody (STJ115417) and rabbit IgG. The amount of immunoprecipitated DNA was checked by quantitative PCR. Histogram was constructed by the ratios of the immunoprecipitated DNA to the input.