

Anti-PTGES2 antibody (88-377) (STJ115401)

GENERAL INFORMATION

Product Type	Primary antibodies
Applications	WB/IF/ICC/ELISA
Host / Source	Rabbit
Reactivity	Human/Mouse/Rat

PRODUCT PROPERTIES

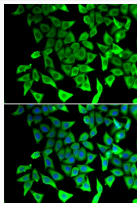
Clonality	Polyclonal
Concentration	Lot specific
Conjugation	Unconjugated
Purification	Affinity purification
Dilution Range	WB:1:500-1:2000 IF/ICC:1:50-1:200 ELISA:Recommended starting concentration is 1 μ g/mL. Please optimize the concentration based on your specific assay requirements.
Formulation	PBS with 0.02% Sodium Azide, 50% Glycerol, pH 7.3.
Isotype	IgG
Molecular Weight	Protein Mw: 42kDa Observed Mw: 34kDa
Storage Instruction	Store at -20°C for up to 1 year from the date of receipt, and avoid repeat freeze-thaw cycles.

TARGET INFORMATION

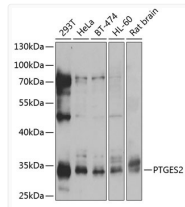
Gene ID	80142
Gene Symbol	PTGES2
UniProt ID	PGES2_HUMAN
Immunogen Region	88-377
Immunogen Sequence	ERSAAQLSLSSRLQLTLYQY KTCPFCSKVRAFDFHALPY QVVEVNPVRRAEIKFSSYRK VPILVAQEGESSQQLNDSSV IISALKTYLVSGQPLEEIT YYPAMKAVNEQGKEVTEFGN KYWLMLNEKEAQVYGGKEA RTEEMKWRQWADDWLVLHLS PNVYRTPTEALASFDYIVRE GKFGAVEGAVAKYMGAAAMY LISKRLKSRHRLQDNVREDL YEAADKWVAAVGGKDRPFMG
Specificity	Recombinant fusion protein containing a sequence corresponding to amino acids 88-377 of human PTGES2 (NP_079348.1).

ADDITIONAL INFORMATION

Note **STRICTLY FOR FURTHER SCIENTIFIC RESEARCH USE ONLY (RUO). MUST NOT TO BE USED IN DIAGNOSTIC OR THERAPEUTIC APPLICATIONS.**



Immunofluorescence analysis of A549 cells using PTGES2 antibody (STJ115401). Blue: DAPI for nuclear staining.



Western blot analysis of extracts of various cell lines, using PTGES2 antibody (STJ115401) at 1:1000 dilution. Secondary antibody: HRP Goat Anti-Rabbit IgG (H+L) (STJS000856) at 1:10000 dilution. Lysates/proteins: 25 μ g per lane. Blocking buffer: 3% nonfat dry milk in TBST. Detection: ECL Basic Kit. Exposure time: 5s.