

Anti-SUFU antibody (325-484) (STJ115390)

GENERAL INFORMATION

Product Type	Primary antibodies
Applications	WB/IHC-P/IF/ICC/ELISA
Host / Source	Rabbit
Reactivity	Human/Mouse/Rat

PRODUCT PROPERTIES

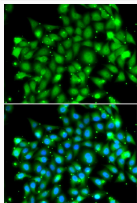
Clonality	Polyclonal
Concentration	Lot specific
Conjugation	Unconjugated
Purification	Affinity purification
Dilution Range	WB:1:500-1:2000 IHC-P:1:50-1:200 IF/ICC:1:50-1:200 ELISA:Recommended starting concentration is 1 Mu g/mL. Please optimize the concentration based on your specific assay requirements.
Formulation	PBS with 0.02% Sodium Azide, 50% Glycerol, pH 7.3.
Isotype	IgG
Molecular Weight	Protein Mw: 54kDa Observed Mw: 54kDa/
Storage Instruction	Store at -20°C for up to 1 year from the date of receipt, and avoid repeat freeze-thaw cycles.

TARGET INFORMATION

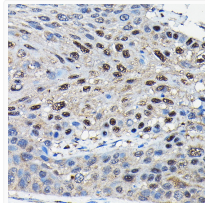
Gene ID	51684
Gene Symbol	SUFU
UniProt ID	SUFU_HUMAN
Immunogen Region	325-484
Immunogen Sequence	PPINPQRQNGLAHDRAPSRK DSLESDSSTAIIPHELIRTR QLESVHLKFNQESGALIPLC LRGRLRHGRHFTYKYSITGDM AITFVSTGVEGAFATEEHYPY AAHGPWLQILL TEEFVEKML EDLEDLTSPEEFKLPKEYSW PEKCLKVSIPLDPVVFDSPLH
Specificity	Recombinant fusion protein containing a sequence corresponding to amino acids 325-484 of human SUFU (NP_057253.2).

ADDITIONAL INFORMATION

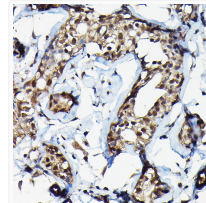
Note **STRICTLY FOR FURTHER SCIENTIFIC RESEARCH USE ONLY (RUO). MUST NOT TO BE USED IN DIAGNOSTIC OR THERAPEUTIC APPLICATIONS.**



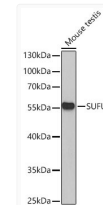
Immunofluorescence analysis of MCF-7 cells using SUFU Rabbit polyclonal antibody (STJ115390). Secondary antibody: Cy3 Goat Anti-Rabbit IgG (H+L) at 1:500 dilution. Blue: DAPI for nuclear staining.



Immunohistochemistry analysis of SUFU in paraffin-embedded human esophageal cancer using SUFU Rabbit polyclonal antibody (STJ115390) at dilution of 1:100 (40x lens). Perform high pressure antigen retrieval with 10 mM citrate buffer pH 6.0 before commencing with immunohistochemistry staining protocol.



Immunohistochemistry analysis of SUFU in paraffin-embedded human breast cancer using SUFU Rabbit polyclonal antibody (STJ115390) at dilution of 1:100 (40x lens). Perform high pressure antigen retrieval with 10 mM citrate buffer pH 6.0 before commencing with immunohistochemistry staining protocol.



Western blot analysis of lysates from Mouse testis using SUFU Rabbit polyclonal antibody (STJ115390) at 1:1000 dilution. Secondary antibody: HRP Goat Anti-Rabbit IgG (H+L) (STJS000856) at 1:10000 dilution. Lysates/proteins: 25 Mu g per lane. Blocking buffer: 3% nonfat dry milk in TBST. Detection: ECL Basic Kit. Exposure time: 90s.