

## Anti-PHF11 antibody (165-319) (STJ115387)

### GENERAL INFORMATION

Product Type	Primary antibodies
Applications	WB/IHC-P/IF/ICC/ELISA
Host / Source	Rabbit
Reactivity	Human/Mouse/Rat

### PRODUCT PROPERTIES

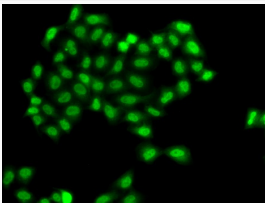
Clonality	Polyclonal
Concentration	Lot specific
Conjugation	Unconjugated
Purification	Affinity purification
Dilution Range	WB:1:1000-1:5000 IHC-P:1:50-1:200 IF/CC:1:50-1:200 ELISA:Recommended starting concentration is 1 $\mu$ g/mL. Please optimize the concentration based on your specific assay requirements.
Formulation	PBS with 0.05% Proclin300, 50% Glycerol, pH 7.3.
Isotype	IgG
Molecular Weight	Protein Mw: 38kDa Observed Mw: 38kDa
Storage Instruction	Store at -20°C for up to 1 year from the date of receipt, and avoid repeat freeze-thaw cycles.

### TARGET INFORMATION

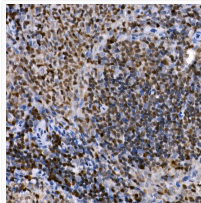
Gene ID	<a href="#">51131</a>
Gene Symbol	<a href="#">PHF11</a>
UniProt ID	<a href="#">PHF11_HUMAN</a>
Immunogen Region	165-319
Immunogen Sequence	IAQSAKFSGVKRRGRKKPL SGNHVQPPETMKNTFIRQV KEEHGRHTDATVKVPFLKKC KEAGLLNYLLEEILDVHSI PEKLMDETTSESDYEEIGSA LFDCLRFEDTFVNFQAAIEK KIHASQQRWQQLKEEIELLQ DLKQTLCSFQENRDL
Specificity	Recombinant fusion protein containing a sequence corresponding to amino acids 165-319 of human PHF11 (NP_001035533.1).

### ADDITIONAL INFORMATION

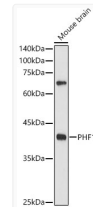
Note **STRICTLY FOR FURTHER SCIENTIFIC RESEARCH USE ONLY (RUO). MUST NOT TO BE USED IN DIAGNOSTIC OR THERAPEUTIC APPLICATIONS.**



Immunofluorescence analysis of A549 cells using PHF11 antibody (STJ115387).



Immunohistochemistry analysis of paraffin-embedded rat spleen using PHF11 Rabbit polyclonal antibody (STJ115387) at dilution of 1:50 (40x lens). Perform high pressure antigen retrieval with 10 mM citrate buffer pH 6.0 before commencing with immunohistochemistry staining protocol.



Western blot analysis of extracts of Mouse brain, using PHF11 antibody (STJ115387) at 1:500 dilution. Secondary antibody: HRP Goat Anti-Rabbit IgG (H+L) (STJS000856) at 1:10000 dilution. Lysates/proteins: 25  $\mu$ g per lane. Blocking buffer: 3% nonfat dry milk in TBST. Detection: ECL Enhanced Kit. Exposure time: 180s.