

Anti-TCEB2 antibody (1-118) (STJ115326)

GENERAL INFORMATION

Product Type	Primary antibodies
Applications	WB/IHC-P/IP/ELISA
Host / Source	Rabbit
Reactivity	Human

PRODUCT PROPERTIES

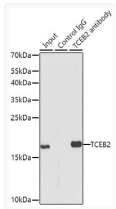
Clonality	Polyclonal
Concentration	Lot specific
Conjugation	Unconjugated
Purification	Affinity purification
Dilution Range	WB:1:500-1:2000 IHC-P:1:50-1:200 IP:0.5 Mu g-4 Mu g antibody for 200 Mu g-400 Mu g extracts of whole cells ELISA:Recommended starting concentration is 1 Mu g/mL. Please optimize the concentration based on your specific assay requirements.
Formulation	PBS with 0.02% Sodium Azide, 50% Glycerol, pH 7.3.
Isotype	IgG
Molecular Weight	Protein Mw: 13kDa Observed Mw: 16kDa
Storage Instruction	Store at -20°C for up to 1 year from the date of receipt, and avoid repeat freeze-thaw cycles.

TARGET INFORMATION

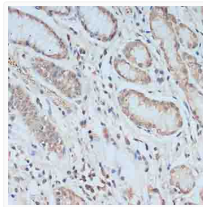
Gene ID	6923
Gene Symbol	ELOB
UniProt ID	ELOB_HUMAN
Immunogen Region	1-118
Immunogen Sequence	MDVFLMIRRHKTTIFTDAKE SSTVFELKRIVEGILKRPPD EQRLYKDDQLDDGKTLGEC GFTSQATARPAATVGLAFR ADDTFEALCIEPFSSPELP DVMKPDQSGSSANEQAVQ
Specificity	Recombinant fusion protein containing a sequence corresponding to amino acids 1-118 of human TCEB2 (NP_009039.1).

ADDITIONAL INFORMATION

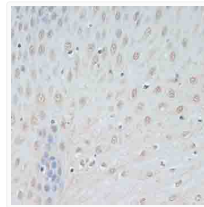
Note **STRICTLY FOR FURTHER SCIENTIFIC RESEARCH USE ONLY (RUO). MUST NOT TO BE USED IN DIAGNOSTIC OR THERAPEUTIC APPLICATIONS.**



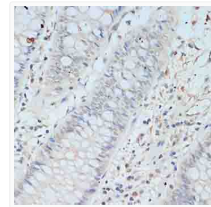
Immunoprecipitation analysis of 150 Mu g extracts of MCF7 cells using 3 Mu g TCEB2 antibody (STJ115326). Western blot was performed from the immunoprecipitate using TCEB2 antibody (STJ115326) at a dilution of 1:500.



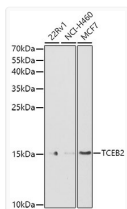
Immunohistochemistry analysis of TCEB2 in paraffin-embedded human stomach using TCEB2 Rabbit polyclonal antibody (STJ115326) at dilution of 1:100 (40x lens). Perform microwave antigen retrieval with 10 mM PBS buffer pH 7.2 before commencing with immunohistochemistry staining protocol.



Immunohistochemistry analysis of TCEB2 in paraffin-embedded human esophagus using TCEB2 Rabbit polyclonal antibody (STJ115326) at dilution of 1:100 (40x lens). Perform microwave antigen retrieval with 10 mM PBS buffer pH 7.2 before commencing with immunohistochemistry staining protocol.



Immunohistochemistry analysis of TCEB2 in paraffin-embedded human colon using TCEB2 Rabbit polyclonal antibody (STJ115326) at dilution of 1:100 (40x lens). Perform microwave antigen retrieval with 10 mM PBS buffer pH 7.2 before commencing with immunohistochemistry staining protocol.



Western blot analysis of various lysates using TCEB2 Rabbit polyclonal antibody (STJ115326) at 1:1000 dilution. Secondary antibody: HRP Goat Anti-Rabbit IgG (H+L) (STJS000856) at 1:10000 dilution. Lysates/proteins: 25 Mu g per lane. Blocking buffer: 3% nonfat dry milk in TBST. Detection: ECL Basic Kit. Exposure time: 90s.