

## Anti-SMARCE1 antibody (1-411) (STJ115316)

### GENERAL INFORMATION

Product Type	Primary antibodies
Applications	WB/IF/ICC/IP/ELISA
Host / Source	Rabbit
Reactivity	Human/Mouse/Rat

### PRODUCT PROPERTIES

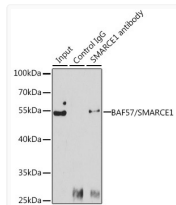
Clonality	Polyclonal
Concentration	Lot specific
Conjugation	Unconjugated
Purification	Affinity purification
Dilution Range	WB:1:500-1:1000 IF/CC:1:50-1:200 IP:0.5 Mu g-4 Mu g antibody for 200 Mu g-400 Mu g extracts of whole cells ELISA:Recommended starting concentration is 1 Mu g/mL. Please optimize the concentration based on your specific assay requirements
Formulation	PBS with 0.02% Sodium Azide, 50% Glycerol, pH 7.3.
Isotype	IgG
Molecular Weight	Protein Mw: 47kDa Observed Mw: 50kDa
Storage Instruction	Store at -20°C for up to 1 year from the date of receipt, and avoid repeat freeze-thaw cycles.

### TARGET INFORMATION

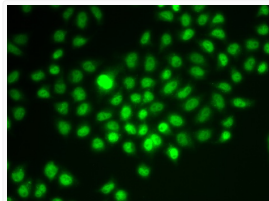
Gene ID	<a href="#">6605</a>
Gene Symbol	<a href="#">SMARCE1</a>
UniProt ID	<a href="#">SMCE1_HUMAN</a>
Immunogen Region	1-411
Immunogen Sequence	MSKRPSYAPPPTAPATQMP STPGFVGYNPYSHLAYNNYR LGGNPGTNSRVTASSGITIP KPKKPPDKPLMPYMRYSRKV WDVVKASNPDLKLWEIGKII GGMWRDLTDEEKQEYLNVEYE AEKIEYNESMKAYHNSPAYL AYINAKSRAEAALIEEESRQR QSRMEKGEPYMSIQPAEDPD DYDDGFMSMKHTATARFQRNH RLISEILSESVVPDVRVSVVT TARMQVLKRQVQSLMVBHQR
Specificity	Recombinant fusion protein containing a sequence corresponding to amino acids 1-411 of human BAF57/BAF57/SMARCE1 (NP_003070.3).

### ADDITIONAL INFORMATION

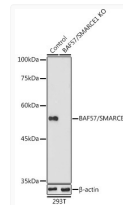
Note **STRICTLY FOR FURTHER SCIENTIFIC RESEARCH USE ONLY (RUO). MUST NOT TO BE USED IN DIAGNOSTIC OR THERAPEUTIC APPLICATIONS.**



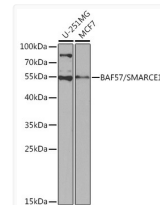
Immunoprecipitation analysis of 150 Mu g extracts of Jurkat cells using 3 Mu g BAF57/BAF57/SMARCE1 antibody (STJ115316). Western blot was performed from the immunoprecipitate using BAF57/BAF57/SMARCE1 antibody (STJ115316) at a dilution of 1:1000.



Immunofluorescence analysis of HeLa cells using [KO Validated] BAF57/SMARCE1 Rabbit polyclonal antibody (STJ115316). Secondary antibody: Cy3 Goat Anti-Rabbit IgG (H+L) at 1:500 dilution.



Western blot analysis of lysates from wild type (WT) and BAF57/SMARCE1 knockout (KO) 293T cells, using [KO Validated] BAF57/SMARCE1 Rabbit polyclonal antibody (STJ115316) at 1:1000 dilution. Secondary antibody: HRP Goat Anti-Rabbit IgG (H+L) (STJS000856) at 1:10000 dilution. Lysates/proteins: 25 Mu g per lane. Blocking buffer: 3% nonfat dry milk in TBST. Detection: ECL Enhanced Kit. Exposure time: 180s.



Western blot analysis of various lysates using [KO Validated] BAF57/SMARCE1 Rabbit polyclonal antibody (STJ115316) at 1:1000 dilution. Secondary antibody: HRP Goat Anti-Rabbit IgG (H+L) (STJS000856) at 1:10000 dilution. Lysates/proteins: 25 Mu g per lane. Blocking buffer: 3% nonfat dry milk in TBST. Detection: ECL Basic Kit. Exposure time: 90s.