

## Anti-RANGAP1 antibody (398-587) (STJ115310)

### GENERAL INFORMATION

Product Type	Primary antibodies
Applications	WB/IHC-P/IF/ICC/ELISA
Host / Source	Rabbit
Reactivity	Human

### PRODUCT PROPERTIES

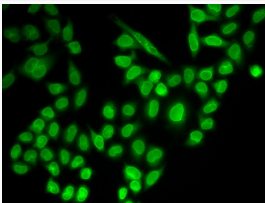
Clonality	Polyclonal
Concentration	Lot specific
Conjugation	Unconjugated
Purification	Affinity purification
Dilution Range	WB:1:500-1:2000 IHC-P:1:50-1:200 IF/ICC:1:50-1:200 ELISA:Recommended starting concentration is 1 Mu g/mL. Please optimize the concentration based on your specific assay requirements.
Formulation	PBS with 0.02% Sodium Azide, 50% Glycerol, pH 7.3.
Isotype	IgG
Molecular Weight	Protein Mw: 64kDa Observed Mw: 64/90kDa
Storage Instruction	Store at -20°C for up to 1 year from the date of receipt, and avoid repeat freeze-thaw cycles.

### TARGET INFORMATION

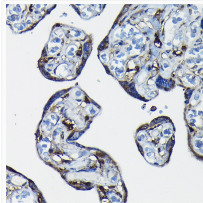
Gene ID	<a href="#">5905</a>
Gene Symbol	<a href="#">RANGAP1</a>
UniProt ID	<a href="#">RAGP1_HUMAN</a>
Immunogen Region	398-587
Immunogen Sequence	PQQRGGQEKSATPSRKILDP NTGEPAPVLSSPPPADVSTF LAFPSPEKLLRLGPKSSVLI AQQTDTSDEPKVVS AFLKVS SVFKDEATVRMAVQDAVDAL MQKAFNSSSFNSNTFLTRLL VHMGLLKSEDKVKAIANLYG PLMALNHHMVQQDYFPKALAP LLLAFVTKPNSALESCSFAR HSLLQTLTKV
Specificity	Recombinant fusion protein containing a sequence corresponding to amino acids 398-587 of human RanGAP1 (NP_002874.1).

### ADDITIONAL INFORMATION

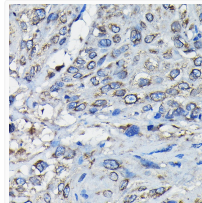
Note **STRICTLY FOR FURTHER SCIENTIFIC RESEARCH USE ONLY (RUO). MUST NOT TO BE USED IN DIAGNOSTIC OR THERAPEUTIC APPLICATIONS.**



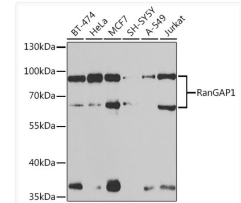
Immunofluorescence analysis of MCF-7 cells using RanGAP1 antibody (STJ115310).



Immunohistochemistry analysis of paraffin-embedded human placenta using RanGAP1 Rabbit polyclonal antibody (STJ115310) at dilution of 1:50 (40x lens). Perform high pressure antigen retrieval with 10 mM citrate buffer pH 6.0 before commencing with immunohistochemistry staining protocol.



Immunohistochemistry analysis of paraffin-embedded human esophageal cancer using RanGAP1 Rabbit polyclonal antibody (STJ115310) at dilution of 1:50 (40x lens). Perform high pressure antigen retrieval with 10 mM citrate buffer pH 6.0 before commencing with immunohistochemistry staining protocol.



Western blot analysis of extracts of various cell lines, using RanGAP1 antibody (STJ115310) at 1:1000 dilution. Secondary antibody: HRP Goat Anti-Rabbit IgG (H+L) (STJ000856) at 1:10000 dilution. Lysates/proteins: 25 Mu g per lane. Blocking buffer: 3% nonfat dry milk in TBST. Detection: ECL Basic Kit. Exposure time: 90s.