

Anti-PSMC3 antibody (1-180) (STJ115308)

GENERAL INFORMATION

Product Type	Primary antibodies
Applications	WB/IF/ICC/IP/ELISA
Host / Source	Rabbit
Reactivity	Human

PRODUCT PROPERTIES

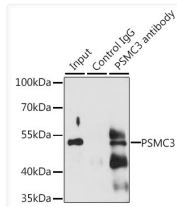
Clonality	Polyclonal
Concentration	Lot specific
Conjugation	Unconjugated
Purification	Affinity purification
Dilution Range	WB:1:500-1:2000 IF/CC:1:50-1:200 IP:0.5 Mu g-4 Mu g antibody for 200 Mu g-400 Mu g extracts of whole cells ELISA:Recommended starting concentration is 1 Mu g/mL. Please optimize the concentration based on your specific assay requirements
Formulation	PBS with 0.02% Sodium Azide, 50% Glycerol, pH 7.3.
Isotype	IgG
Molecular Weight	Protein Mw: 49kDa Observed Mw: 50kDa
Storage Instruction	Store at -20°C for up to 1 year from the date of receipt, and avoid repeat freeze-thaw cycles.

TARGET INFORMATION

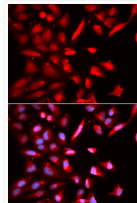
Gene ID	5702
Gene Symbol	PSMC3
UniProt ID	PRS6A_HUMAN
Immunogen Region	1-180
Immunogen Sequence	MEEGGRDKAPVQPQQSPAAA PGGTDEKPSGKERRDAGDKD KEQELSEEDKQLQDELEMLV ERLGEKDTSLYRPALEELRR QIRSTTSMTSVPKPLKFLR PHYGKLKEIYENMAPGENKR FAADIISVLAMTMSGERECL KYRLVGSQEELASWGHEYVR HLAGEVAKIEWQELDDAEKVQ
Specificity	Recombinant fusion protein containing a sequence corresponding to amino acids 1-180 of human PSMC3 (NP_002799.3).

ADDITIONAL INFORMATION

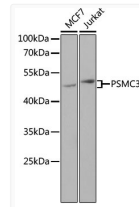
Note **STRICTLY FOR FURTHER SCIENTIFIC RESEARCH USE ONLY (RUO). MUST NOT TO BE USED IN DIAGNOSTIC OR THERAPEUTIC APPLICATIONS.**



Immunoprecipitation analysis of 200 Mu g extracts of Jurkat cells, using 3 Mu g PSMC3 antibody (STJ115308). Western blot was performed from the immunoprecipitate using PSMC3 antibody (STJ115308) at a dilution of 1:1000.



Immunofluorescence analysis of U2OS cells using PSMC3 Rabbit polyclonal antibody (STJ115308). Secondary antibody: Cy3 Goat Anti-Rabbit IgG (H+L) at 1:500 dilution. Blue: DAPI for nuclear staining.



Western blot analysis of various lysates using PSMC3 Rabbit polyclonal antibody (STJ115308) at 1:1000 dilution. Secondary antibody: HRP Goat Anti-Rabbit IgG (H+L) (STJS000856) at 1:10000 dilution. Lysates/proteins: 25 Mu g per lane. Blocking buffer: 3% nonfat dry milk in TBST.