

Anti-NUDT1 antibody (1-179) (STJ115293)

GENERAL INFORMATION

Product Type	Primary antibodies
Applications	WB/IP/ELISA
Host / Source	Rabbit
Reactivity	Human

PRODUCT PROPERTIES

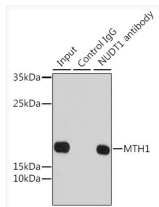
Clonality	Polyclonal
Concentration	Lot specific
Conjugation	Unconjugated
Purification	Affinity purification
Dilution Range	WB:1:500-1:2000 IP:0.5 Mu g-4 Mu g antibody for 200 Mu g extracts of whole cells ELISA:Recommended starting concentration is 1 Mu g/mL. Please optimize the concentration based on your specific assay requirements.
Formulation	PBS with 0.02% Sodium Azide, 50% Glycerol, pH 7.3.
Isotype	IgG
Molecular Weight	Protein Mw: 18kDa Observed Mw: 18kDa
Storage Instruction	Store at -20°C for up to 1 year from the date of receipt, and avoid repeat freeze-thaw cycles.

TARGET INFORMATION

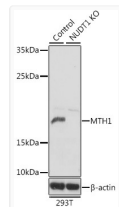
Gene ID	4521
Gene Symbol	NUDT1
UniProt ID	8ODP_HUMAN
Immunogen Region	1-179
Immunogen Sequence	MSGISPQQMGEPEGSWSGKN PGTMGASRLYTLVLVLPQR VLLGMKKRFGAGRWNGFGG KVQEGETIEDGARRELQEEES GLTVDALHKVGVVFEFVGE PELMDVHVFCFDSIQGTPVE SDEMRPCWFQLDQIPFKDMW PDDSYWFPLLLQKKKFFHYGF KFGQDITLDYTLREVDTV
Specificity	Recombinant fusion protein containing a sequence corresponding to amino acids 1-179 of human MTH1 (NP_945192.1).

ADDITIONAL INFORMATION

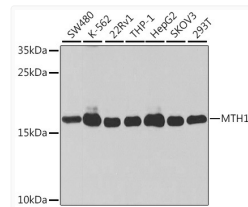
Note **STRICTLY FOR FURTHER SCIENTIFIC RESEARCH USE ONLY (RUO). MUST NOT TO BE USED IN DIAGNOSTIC OR THERAPEUTIC APPLICATIONS.**



Immunoprecipitation analysis of 200 Mu g extracts of 293T cells using 1 Mu g MTH1 antibody (STJ115293). Western blot was performed from the immunoprecipitate using MTH1 antibody (STJ115293) at a dilution of 1:1000.



Western blot analysis of lysates from wild type (WT) and MTH1 knockout (KO) 293T cells, using [KO Validated] MTH1 Rabbit polyclonal antibody (STJ115293) at 1:1000 dilution. Secondary antibody: HRP Goat Anti-Rabbit IgG (H+L) (STJS000856) at 1:10000 dilution. Lysates/proteins: 25 Mu g per lane. Blocking buffer: 3% nonfat dry milk in TBST. Detection: ECL Basic Kit. Exposure time: 10s.



Western blot analysis of various lysates using [KO Validated] MTH1 Rabbit polyclonal antibody (STJ115293) at 1:1000 dilution. Secondary antibody: HRP Goat Anti-Rabbit IgG (H+L) (STJS000856) at 1:10000 dilution. Lysates/proteins: 25 Mu g per lane. Blocking buffer: 3% nonfat dry milk in TBST. Detection: ECL Basic Kit. Exposure time: 10s.