

## Anti-EIF4B antibody (352-611) (STJ115264)

### GENERAL INFORMATION

Product Type	Primary antibodies
Applications	WB/IF/ICC/ELISA
Host / Source	Rabbit
Reactivity	Human/Mouse/Rat

### PRODUCT PROPERTIES

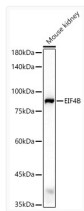
Clonality	Polyclonal
Concentration	Lot specific
Conjugation	Unconjugated
Purification	Affinity purification
Dilution Range	WB:1:500-1:1000 IF/CC:1:50-1:200 ELISA:Recommended starting concentration is 1 $\mu$ g/mL. Please optimize the concentration based on your specific assay requirements.
Formulation	PBS with 0.05% Proclin300, 50% Glycerol, pH 7.3.
Isotype	IgG
Molecular Weight	Protein Mw: 69kDa Observed Mw: 80kDa
Storage Instruction	Store at -20°C for up to 1 year from the date of receipt, and avoid repeat freeze-thaw cycles.

### TARGET INFORMATION

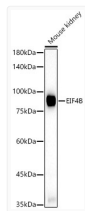
Gene ID	<a href="#">1975</a>
Gene Symbol	<a href="#">EIF4B</a>
UniProt ID	<a href="#">IF4B_HUMAN</a>
Immunogen Region	352-611
Immunogen Sequence	SQSTRAASIFGGAKPVDATAA REREVEERLQKEQEKLQRQL DEPKLERRPRERHPSWRSEE TQERERSRTGSESSQTGTST TSSRNARRRESEKLENETL NKEEDCHSPTSKPPKPDQPL KVMPPPPKENAWVKRSSNP PARSQSSDTEQQSPTSGGGK VAPQPSEEGPGRKDKENKVD GMNAPKQGTGNSSRGP GDGG NRDHWKESDRKDGKKDQDSR SAPEPKPEENPASKFSSA
Specificity	Recombinant fusion protein containing a sequence corresponding to amino acids 352-611 of human EIF4B (NP_001408.2).

### ADDITIONAL INFORMATION

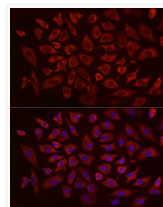
Note STRICTLY FOR FURTHER SCIENTIFIC RESEARCH USE ONLY (RUO). MUST NOT TO BE USED IN DIAGNOSTIC OR THERAPEUTIC APPLICATIONS.



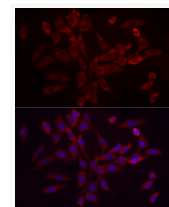
Western blot analysis of extracts of Rat skeletal muscle, using EIF4B antibody (STJ115264) at 1:400 dilution. Secondary antibody: HRP Goat Anti-rabbit IgG (H+L) (STJS000856) at 1:10000 dilution. Lysates/proteins: 25  $\mu$ g per lane. Blocking buffer: 3% non-fat dry milk in TBST. Detection: ECL Basic Kit. Exposure time: 20s.



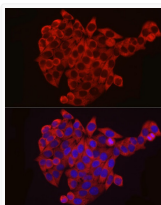
Western blot analysis of extracts of mouse kidney, using EIF4B antibody (STJ115264) at 1:400 dilution. Secondary antibody: HRP Goat Anti-rabbit IgG (H+L) (STJS000856) at 1:10000 dilution. Lysates/proteins: 25  $\mu$ g per lane. Blocking buffer: 3% non-fat dry milk in TBST. Detection: ECL Basic Kit. Exposure time: 20s.



Immunofluorescence analysis of A-549 using EIF4B antibody (STJ115264) at dilution of 1:20 (40x lens). Blue: DAPI for nuclear staining.



Immunofluorescence analysis of NIH/3T3 using EIF4B antibody (STJ115264) at dilution of 1:20 (40x lens). Blue: DAPI for nuclear staining.



Immunofluorescence analysis of HeLa using EIF4B antibody (STJ115264) at dilution of 1:20 (40x lens). Blue: DAPI for nuclear staining.