

Anti-DSP antibody (2609-2830) (STJ115263)

GENERAL INFORMATION

Product Type	Primary antibodies
Applications	WB/IHC-P/ELISA
Host / Source	Rabbit
Reactivity	Human/Mouse/Rat

PRODUCT PROPERTIES

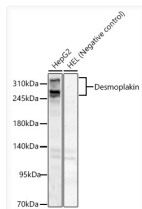
Clonality	Polyclonal
Concentration	Lot specific
Conjugation	Unconjugated
Purification	Affinity purification
Dilution Range	WB:1:500-1:1000 IHC-P:1:50-1:200 ELISA:Recommended starting concentration is 1 µg/mL. Please optimize the concentration based on your specific assay requirements.
Formulation	PBS with 0.05% Proclin300, 50% Glycerol, pH7.3.
Isotype	IgG
Molecular Weight	Protein Mw: 332kDa Observed Mw: 260-332kDa
Storage Instruction	Store at -20°C for up to 1 year from the date of receipt, and avoid repeat freeze-thaw cycles.

TARGET INFORMATION

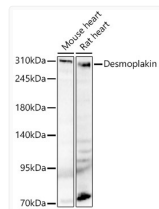
Gene ID	1832
Gene Symbol	DSP
UniProt ID	DESP_HUMAN
Immunogen Region	2609-2830
Immunogen Sequence	FSDTLEESSPIAIFDTENL EKISITEGIERGIVDSITGQ RLLEAQAQCTGGIIHPTTGQK LSLQDAVSQGVLDQDMATRL KPAQKAFIFGFEVKGKMKMS AAEAVKEKWLPYEAGQRFLF FQYLTGGLVDPEVHGRISTE EAIRKGFIDGAAQLQDTS SYAKILTCPKTKLKISYKDA INRSMVEDITGLRLLEAASV SSKGLPSPYNMSSAPGSRSG SR
Specificity	A synthetic peptide corresponding to a sequence within amino acids 2609-2830 of human Desmoplakin (NP_004406.2).

ADDITIONAL INFORMATION

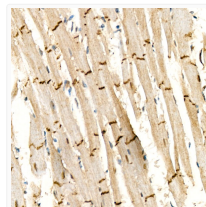
Note STRICTLY FOR FURTHER SCIENTIFIC RESEARCH USE ONLY (RUO). MUST NOT TO BE USED IN DIAGNOSTIC OR THERAPEUTIC APPLICATIONS.



Western blot analysis of various lysates, using Desmoplakin rabbit polyclonal antibody (STJ115263) at 1:800 dilution. Secondary antibody: HRP Goat Anti-rabbit IgG (H+L) (STJS000856) at 1:10000 dilution. Lysates/proteins: 25µg per lane. Blocking buffer: 3% non-fat dry milk in TBST. Detection: ECL Basic Kit. Exposure time: 60s.



Western blot analysis of various lysates, using Desmoplakin rabbit polyclonal antibody (STJ115263) at 1:800 dilution. Secondary antibody: HRP Goat Anti-rabbit IgG (H+L) (STJS000856) at 1:10000 dilution. Lysates/proteins: 25µg per lane. Blocking buffer: 3% non-fat dry milk in TBST. Detection: ECL Basic Kit. Exposure time: 60s.



Immunohistochemistry analysis of paraffin-embedded mouse heart using Desmoplakin rabbit polyclonal antibody (STJ115263) at dilution of 1:50 (40x lens). Perform high pressure antigen retrieval with 10 mM citrate buffer pH 6.0 before commencing with immunohistochemistry staining protocol.