

## Anti-DLD antibody (36-300) (STJ115260)

### GENERAL INFORMATION

Product Type	Primary antibodies
Applications	WB/IHC-P/IF/ICC/ELISA
Host / Source	Rabbit
Reactivity	Human/Mouse

### PRODUCT PROPERTIES

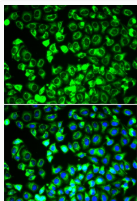
Clonality	Polyclonal
Concentration	Lot specific
Conjugation	Unconjugated
Purification	Affinity purification
Dilution Range	WB:1:500-1:2000 IHC-P:1:100-1:500 IF/ICC:1:50-1:200 ELISA:Recommended starting concentration is 1 Mu g/mL. Please optimize the concentration based on your specific assay requirements.
Formulation	PBS with 0.02% Sodium Azide, 50% Glycerol, pH 7.3.
Isotype	IgG
Molecular Weight	Protein Mw: 54kDa Observed Mw: 54kDa
Storage Instruction	Store at -20°C for up to 1 year from the date of receipt, and avoid repeat freeze-thaw cycles.

### TARGET INFORMATION

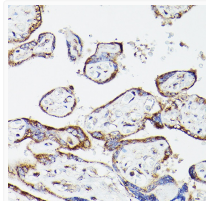
Gene ID	<a href="#">1738</a>
Gene Symbol	<a href="#">DLD</a>
UniProt ID	<a href="#">DLDH_HUMAN</a>
Immunogen Region	36-300
Immunogen Sequence	ADQPIDADVTVIGSGPGGYV AAIKAAQLGFKVCIEKNET LGGTCLNVGCIPSKALLNNS HYHHMAHGKDFASRGIEMSE VRLNLDKMMEQKSTAVKALT GGIAHLFKQNKVHVHNGYGK ITGKNQVTATKADGGTQVID TKNLIATGSEVTPFPGITI DEDTIVSSTGALSLLKKVPEK MVVIGAGVIGVELGSVWQRL GADVTAVEFLGHVGGVGDIM EISKNFQRILQKQGFKFL
Specificity	Recombinant fusion protein containing a sequence corresponding to amino acids 36-300 of human DLDH/DLDH/DLDH/DLD (NP_000099.2).

### ADDITIONAL INFORMATION

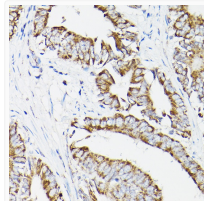
Note STRICTLY FOR FURTHER SCIENTIFIC RESEARCH USE ONLY (RUO). MUST NOT TO BE USED IN DIAGNOSTIC OR THERAPEUTIC APPLICATIONS.



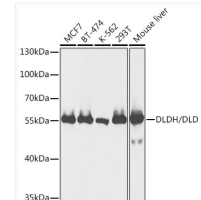
Immunofluorescence analysis of HeLa cells using DLDH/DLDH/DLDH/DLD antibody (STJ115260). Blue: DAPI for nuclear staining.



Immunohistochemistry analysis of paraffin-embedded human placenta using DLDH/DLDH/DLDH/DLD Rabbit polyclonal antibody (STJ115260) at dilution of 1:500 (40x lens). Perform high pressure antigen retrieval with 10 mM citrate buffer pH 6.0 before commencing with immunohistochemistry staining protocol.



Immunohistochemistry analysis of paraffin-embedded human colon carcinoma using DLDH/DLDH/DLDH/DLD Rabbit polyclonal antibody (STJ115260) at dilution of 1:500 (40x lens). Perform high pressure antigen retrieval with 10 mM citrate buffer pH 6.0 before commencing with immunohistochemistry staining protocol.



Western blot analysis of extracts of various cell lines, using DLDH/DLDH/DLDH/DLD antibody (STJ115260) at 1:1000 dilution. Secondary antibody: HRP Goat Anti-Rabbit IgG (H+L) (STJS000856) at 1:10000 dilution. Lysates/proteins: 25 Mu g per lane. Blocking buffer: 3% nonfat dry milk in TBST. Detection: ECL Basic Kit. Exposure time: 5s.