

Anti-DBI antibody (1-104) (STJ115257)

GENERAL INFORMATION

Product Type	Primary antibodies
Applications	WB/IHC-P/IF/ICC/IP/ELISA
Host / Source	Rabbit
Reactivity	Human/Mouse/Rat

PRODUCT PROPERTIES

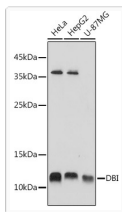
Clonality	Polyclonal
Concentration	Lot specific
Conjugation	Unconjugated
Purification	Affinity purification
Dilution Range	WB:1:500-1:1000 IHC-P:1:50-1:200 IF/CC:1:50-1:200 IP:0.5 Mu g-4 Mu g antibody for 200 Mu g-400 Mu g extracts of whole cells ELISA:Recommended starting concentration is 1 Mu g/mL. Please optimize the concentration based on your specif
Formulation	PBS with 0.05% Proclin300, 50% Glycerol, pH 7.3.
Isotype	IgG
Molecular Weight	Protein Mw: 10kDa Observed Mw: 11kDa
Storage Instruction	Store at-20°C for up to 1 year from the date of receipt, and avoid repeat freeze-thaw cycles.

TARGET INFORMATION

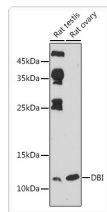
Gene ID	1622
Gene Symbol	DBI
UniProt ID	ACBP_HUMAN
Immunogen Region	1-104
Immunogen Sequence	MWGDLLWLLPPASANPGTGTE AEFEKAAEEVRLKTKPSDE EMLFIYGHYKQATVGDINTE RPGMLDFTGKAKWDAWNEK GTSKEDAMKAYINKVEELKK KYGI
Specificity	Recombinant fusion protein containing a sequence corresponding to amino acids 1-104 of human DBI (NP_001171513.1).

ADDITIONAL INFORMATION

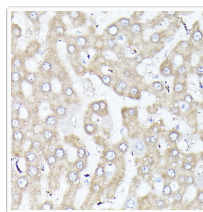
Note	STRICTLY FOR FURTHER SCIENTIFIC RESEARCH USE ONLY (RUO). MUST NOT TO BE USED IN DIAGNOSTIC OR THERAPEUTIC APPLICATIONS.
------	---



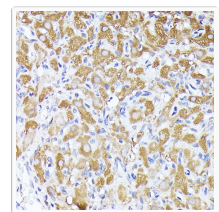
Western blot analysis of extracts of various cell lines, using DBI antibody (STJ115257) at 1:1000 dilution. Secondary antibody: HRP Goat Anti-rabbit IgG (H+L) (STJS000856) at 1:10000 dilution. Lysates/proteins: 25 μ g per lane. Blocking buffer: 3% non-fat dry milk in TBST. Detection: ECL Basic Kit. Exposure time: 1s.



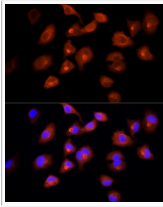
Western blot analysis of extracts of various cell lines, using DBI antibody (STJ115257) at 1:1000 dilution. Secondary antibody: HRP Goat Anti-rabbit IgG (H+L) (STJS000856) at 1:10000 dilution. Lysates/proteins: 25 μ g per lane. Blocking buffer: 3% non-fat dry milk in TBST. Detection: ECL Basic Kit. Exposure time: 180s.



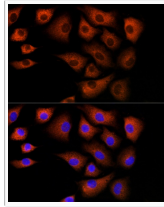
Immunohistochemistry analysis of paraffin-embedded rat liver using DBI rabbit polyclonal antibody (STJ115257) at dilution of 1:200 (40x lens). Perform high pressure antigen retrieval with 10 mM citrate buffer pH 6.0 before commencing with immunohistochemistry staining protocol.



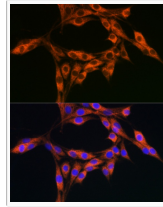
Immunohistochemistry analysis of paraffin-embedded rat ovary using DBI rabbit polyclonal antibody (STJ115257) at dilution of 1:200 (40x lens). Perform high pressure antigen retrieval with 10 mM citrate buffer pH 6.0 before commencing with immunohistochemistry staining protocol.



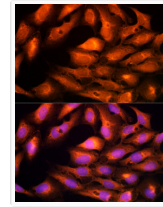
Immunofluorescence analysis of A-549 cells using DBI rabbit polyclonal antibody (STJ115257) at dilution of 1:100 (40x lens). Blue: DAPI for nuclear staining.



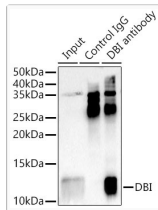
Immunofluorescence analysis of NIH/3T3 cells using DBI rabbit polyclonal antibody (STJ115257) at dilution of 1:100 (40x lens). Blue: DAPI for nuclear staining.



Immunofluorescence analysis of PC-12 cells using DBI rabbit polyclonal antibody (STJ115257) at dilution of 1:100 (40x lens). Blue: DAPI for nuclear staining.



Immunofluorescence analysis of U2OS cells using DBI rabbit polyclonal antibody (STJ115257) at dilution of 1:100 (40x lens). Blue: DAPI for nuclear staining.



Immunoprecipitation analysis of 300 μ g extracts of HeLa cells using 3 μ g DBI antibody (STJ115257). Western blot was performed from the immunoprecipitate using DBI antibody (STJ115257) at a dilution of 1:1000.