

## Anti-C3a antibody (1364-1663) (STJ115248)

### GENERAL INFORMATION

Product Type	Primary antibodies
Applications	IF/ICC/ELISA
Host / Source	Rabbit
Reactivity	Human/Mouse/Rat

### PRODUCT PROPERTIES

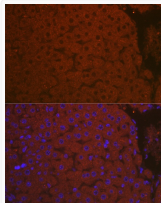
Clonality	Polyclonal
Concentration	Lot specific
Conjugation	Unconjugated
Purification	Affinity purification
Dilution Range	IF/ICC:1:50-1:200 ELISA:Recommended starting concentration is 1 µg/mL. Please optimize the concentration based on your specific assay requirements.
Formulation	PBS with 0.09% Sodium Azide, 50% Glycerol, pH7.3.
Isotype	IgG
Molecular Weight	Protein Mw: 187kDa Observed Mw:
Storage Instruction	Store at -20°C for up to 1 year from the date of receipt, and avoid repeat freeze-thaw cycles.

### TARGET INFORMATION

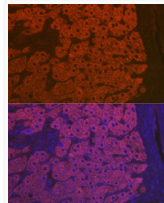
Gene ID	<a href="#">718</a>
Gene Symbol	<a href="#">C3</a>
UniProt ID	<a href="#">CO3_HUMAN</a>
Immunogen Region	1364-1663
Immunogen Sequence	KVTIKPAPETEKRPQDAKNT MILEICTRYRGDQDATMSIL DISMMTGFAPDTDDLKQLAN GVDRIYSKYELDKAFSDRNT LIYLDKVSHSEDDCLAFKV HQYFNVELIQPGAVKVVYAY NLEESCTRFYHPEKEDGKLN KLCRDELRCRAEENCFIGKS DDKVTLLEERLDKACEPGVDY VYKTRLVKVQLSNDFEYIM AIEQTIKSGSDEVQVGQQRT FISPIKCREALKLEEKHY
Specificity	Recombinant fusion protein containing a sequence corresponding to amino acids 1364-1663 of human Complement C3 (NP_000055.2).

### ADDITIONAL INFORMATION

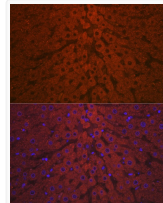
Note **STRICTLY FOR FURTHER SCIENTIFIC RESEARCH USE ONLY (RUO). MUST NOT TO BE USED IN DIAGNOSTIC OR THERAPEUTIC APPLICATIONS.**



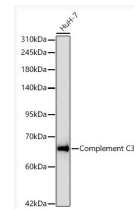
Immunofluorescence analysis of paraffin-embedded mouse liver using Complement C3 Rabbit polyclonal antibody (STJ115248) at dilution of 1:100 (40x lens). Secondary antibody: Cy3 Goat Anti-Rabbit IgG (H+L) at 1:500 dilution. Blue: DAPI for nuclear staining.



Immunofluorescence analysis of paraffin-embedded human liver cancer using Complement C3 Rabbit polyclonal antibody (STJ115248) at dilution of 1:100 (40x lens). Secondary antibody: Cy3 Goat Anti-Rabbit IgG (H+L) at 1:500 dilution. Blue: DAPI for nuclear staining.



Immunofluorescence analysis of paraffin-embedded rat liver using Complement C3 Rabbit polyclonal antibody (STJ115248) at dilution of 1:100 (40x lens). Secondary antibody: Cy3 Goat Anti-Rabbit IgG (H+L) at 1:500 dilution. Blue: DAPI for nuclear staining.



Western blot analysis of lysates from HuH-7 cells using Complement C3 Rabbit polyclonal antibody (STJ115248) at 1:1000 dilution incubated overnight at 4 °C. Secondary antibody: HRP-conjugated Goat anti-Rabbit IgG (H+L) (STJS000856) at 1:10000 dilution. Lysates/proteins: 25 µg per lane. Blocking buffer: 3% nonfat dry milk in TBST. Detection: ECL Basic Kit. Exposure time: 60 s.