

## Anti-CTCF antibody (1-260) (STJ115237)

### GENERAL INFORMATION

Product Type	Primary antibodies
Applications	WB/IHC-P/IF/ICC/IP/ELISA/ChIP
Host / Source	Rabbit
Reactivity	Human/Mouse/Rat

### PRODUCT PROPERTIES

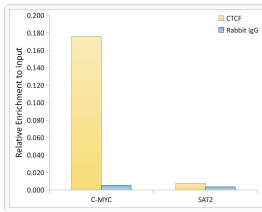
Clonality	Polyclonal
Concentration	Lot specific
Conjugation	Unconjugated
Purification	Affinity purification
Dilution Range	WB:1:1000-1:2000 IHC-P:1:50-1:200 IF/CC:1:50-1:200 IP:0.5 Mu g-4 Mu g antibody for 200 Mu g-400 Mu g extracts of whole cells ELISA:Recommended starting concentration is 1 Mu g/mL. Please optimize the concentration based on your speci
Formulation	PBS with 0.09% Sodium Azide, 50% Glycerol, pH 7.3.
Isotype	IgG
Molecular Weight	Protein Mw: 83kDa Observed Mw: 140kDa
Storage Instruction	Store at-20°C for up to 1 year from the date of receipt, and avoid repeat freeze-thaw cycles.

### TARGET INFORMATION

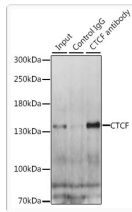
Gene ID	<a href="#">10664</a>
Gene Symbol	<a href="#">CTCF</a>
UniProt ID	<a href="#">CTCF_HUMAN</a>
Immunogen Region	1-260
Immunogen Sequence	MEGDAVEAIVEESETFIKGG ERKTYQRRREGGQEEDACHL PQNQTDGGGEVVQDVNSSVQM VMMEQLDPTLLQMKTEVMG TVAPEAEA AVDDTQIITLQV VNMEEQPINIGELQLVQVPV PVTVPVATTSVEELQGAYEN EVSKEGLAESEPMICHTLPL PEGFQVVKVGANGEVETLEQ GELPPQEDPSWQKDPDYQPP AKKTKKTKKSKLRYTEEGKD VDVSVDYDFEEEQQEGLLSE
Specificity	Recombinant fusion protein containing a sequence corresponding to amino acids 1-260 of human CTCF (NP_006556.1).

### ADDITIONAL INFORMATION

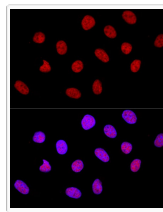
Note	STRICTLY FOR FURTHER SCIENTIFIC RESEARCH USE ONLY (RUO). MUST NOT TO BE USED IN DIAGNOSTIC OR THERAPEUTIC APPLICATIONS.
------	---



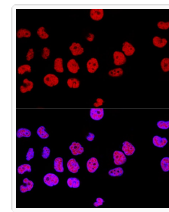
Chromatin immunoprecipitation analysis of extracts of 293T cells, using CTCF antibody (STJ115237) and rabbit IgG. The amount of immunoprecipitated DNA was checked by quantitative PCR. Histogram was constructed by the ratios of the immunoprecipitated DNA to the input.



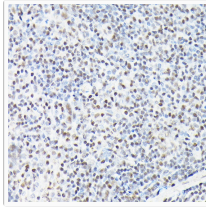
Immunoprecipitation analysis of 200 Mu g extracts of HeLa cells, using 3 Mu g CTCF antibody (STJ115237). Western blot was performed from the immunoprecipitate using CTCF antibody (STJ115237) at a dilution of 1:1000.



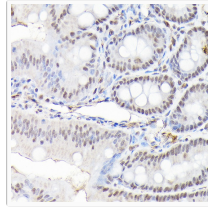
Confocal immunofluorescence analysis of U-2 OS cells using CTCF Rabbit polyclonal antibody (STJ115237) at dilution of 1:100. Blue: DAPI for nuclear staining.



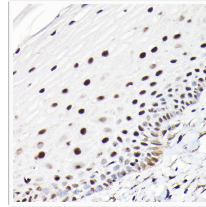
Confocal immunofluorescence analysis of HeLa cells using CTCF Rabbit polyclonal antibody (STJ115237) at dilution of 1:100. Blue: DAPI for nuclear staining.



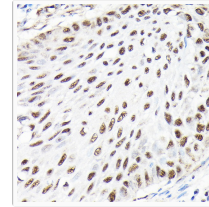
Immunohistochemistry analysis of CTCF in paraffin-embedded mouse spleen using CTCF Rabbit polyclonal antibody (STJ115237) at dilution of 1:100 (40x lens). Perform high pressure antigen retrieval with 10 mM citrate buffer pH 6.0 before commencing with immunohistochemistry staining protocol.



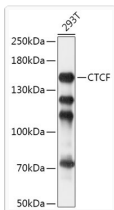
Immunohistochemistry analysis of CTCF in paraffin-embedded mouse colon using CTCF Rabbit polyclonal antibody (STJ115237) at dilution of 1:100 (40x lens). Perform high pressure antigen retrieval with 10 mM citrate buffer pH 6.0 before commencing with immunohistochemistry staining protocol.



Immunohistochemistry analysis of CTCF in paraffin-embedded human normal cervix using CTCF Rabbit polyclonal antibody (STJ115237) at dilution of 1:100 (40x lens). Perform high pressure antigen retrieval with 10 mM citrate buffer pH 6.0 before commencing with immunohistochemistry staining protocol.



Immunohistochemistry analysis of CTCF in paraffin-embedded human lung cancer using CTCF Rabbit polyclonal antibody (STJ115237) at dilution of 1:100 (40x lens). Perform high pressure antigen retrieval with 10 mM citrate buffer pH 6.0 before commencing with immunohistochemistry staining protocol.



Western blot analysis of lysates from 293T cells, using CTCF Rabbit polyclonal antibody (STJ115237) at 1:1000 dilution. Secondary antibody: HRP Goat Anti-Rabbit IgG (H+L) (STJS000856) at 1:10000 dilution. Lysates/proteins: 25 Mu g per lane. Blocking buffer: 3% nonfat dry milk in TBST. Detection: ECL Basic Kit. Exposure time: 5s.