

Anti-AGER antibody (40-210) (STJ115229)

GENERAL INFORMATION

Product Type	Primary antibodies
Applications	WB/ELISA
Host / Source	Rabbit
Reactivity	Human/Mouse/Rat

PRODUCT PROPERTIES

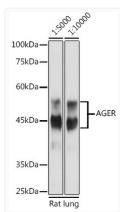
Clonality	Polyclonal
Concentration	Lot specific
Conjugation	Unconjugated
Purification	Affinity purification
Dilution Range	WB:1:5000-1:10000 ELISA:Recommended starting concentration is 1 µg/mL. Please optimize the concentration based on your specific assay requirements.
Formulation	PBS with 0.09% Sodium Azide, 50% Glycerol, pH7.3.
Isotype	IgG
Molecular Weight	Protein Mw: 43kDa Observed Mw: 45kDa/55kDa
Storage Instruction	Store at -20°C for up to 1 year from the date of receipt, and avoid repeat freeze-thaw cycles.

TARGET INFORMATION

Gene ID	177
Gene Symbol	AGER
UniProt ID	RAGE_HUMAN
Immunogen Region	40-210
Immunogen Sequence	GAPKKPPQRLEWKLNTGRTE AWKVLSPQGGGPWDSVARVL PNGSLFLPAVGIQDEGIFRC QAMNRNGKETKSNYRVRVYQ IPGKPEIVDSASELTAGVPN KVGTCVSEGSYPAGTLSWHL DGKPLVPNEKGVSVKEQTRR HPETGLFTLQSELMVTPARG GDRPRTFSCSF
Specificity	Recombinant fusion protein containing a sequence corresponding to amino acids 40-210 of human AGER (NP_001127.1).

ADDITIONAL INFORMATION

Note STRICTLY FOR FURTHER SCIENTIFIC RESEARCH USE ONLY (RUO). MUST NOT TO BE USED IN DIAGNOSTIC OR THERAPEUTIC APPLICATIONS.



Western blot analysis of lysates from Rat lung, using AGER Rabbit polyclonal antibody (STJ115229) at 1:5000/1:10000 dilution. Secondary antibody: HRP Goat Anti-Rabbit IgG (H+L) (STJS000856) at 1:10000 dilution. Lysates/proteins: 25 µg per lane. Blocking buffer: 3% nonfat dry milk in TBST. Detection: ECL Basic Kit. Exposure time: 1s.