

## Anti-HHLA2 antibody (30-200) (STJ115227)

### GENERAL INFORMATION

Product Type	Primary antibodies
Applications	WB/IHC-P/ELISA
Host / Source	Rabbit
Reactivity	Human

### PRODUCT PROPERTIES

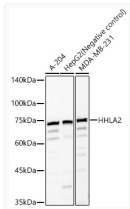
Clonality	Polyclonal
Concentration	Lot specific
Conjugation	Unconjugated
Purification	Affinity purification
Dilution Range	WB:1:1000-1:5000 IHC-P:1:50-1:200 ELISA:Recommended starting concentration is 1 $\mu$ g/mL. Please optimize the concentration based on your specific assay requirements.
Formulation	PBS with 0.05% Proclin300, 50% Glycerol, pH 7.3.
Isotype	IgG
Molecular Weight	Protein Mw: 47kDa Observed Mw: 70-80kDa
Storage Instruction	Store at -20°C for up to 1 year from the date of receipt, and avoid repeat freeze-thaw cycles.

### TARGET INFORMATION

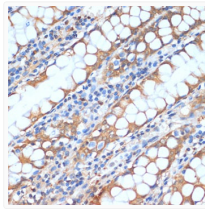
Gene ID	<a href="#">11148</a>
Gene Symbol	<a href="#">HHLA2</a>
UniProt ID	<a href="#">HHLA2_HUMAN</a>
Immunogen Region	30-200
Immunogen Sequence	IYVPMNEQIVIGRLDEDIIL PSSFERGSEVVIHWKYQDSY KVHSYYKGDHLESQDPRYA NRTSLFYNEIQNGNASLFFR RVSLLEDGIYTCYVGTAIQV ITNKVVLKVGVFLTPVMKYE KRNTNSFLICSVLSVYPRPI ITWKMDNTPISENNMEETGS LDSFSINSPLN
Specificity	Recombinant fusion protein containing a sequence corresponding to amino acids 30-200 of human HHLA2 (NP_009003.1).

### ADDITIONAL INFORMATION

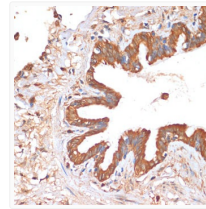
Note **STRICTLY FOR FURTHER SCIENTIFIC RESEARCH USE ONLY (RUO). MUST NOT TO BE USED IN DIAGNOSTIC OR THERAPEUTIC APPLICATIONS.**



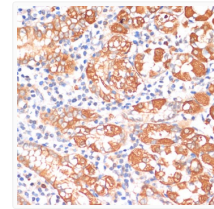
Western blot analysis of various lysates, using HHLA2 rabbit polyclonal antibody (STJ115227) at 1:3500 dilution. Secondary antibody: HRP Goat Anti-rabbit IgG (H+L) (STJS000856) at 1:10000 dilution. Lysates/proteins: 25  $\mu$ g per lane. Blocking buffer: 3% non-fat dry milk in TBST. Detection: ECL Basic Kit. Exposure time: 60s.



Immunohistochemistry analysis of paraffin-embedded human colon using HHLA2 antibody (STJ115227) at dilution of 1:100 (40x lens). Perform microwave antigen retrieval with 10 mM PBS buffer pH 7.2 before commencing with immunohistochemistry staining protocol.



Immunohistochemistry analysis of paraffin-embedded human lung using HHLA2 antibody (STJ115227) at dilution of 1:100 (40x lens). Perform microwave antigen retrieval with 10 mM PBS buffer pH 7.2 before commencing with immunohistochemistry staining protocol.



Immunohistochemistry analysis of paraffin-embedded human stomach using HHLA2 antibody (STJ115227) at dilution of 1:100 (40x lens). Perform microwave antigen retrieval with 10 mM PBS buffer pH 7.2 before commencing with immunohistochemistry staining protocol.