

Anti-TBCB antibody (1-244) (STJ115213)

GENERAL INFORMATION

Product Type	Primary antibodies
Applications	WB/IHC-P/ELISA
Host / Source	Rabbit
Reactivity	Human/Mouse/Rat

PRODUCT PROPERTIES

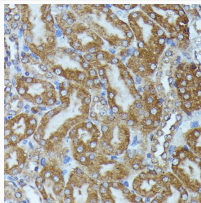
Clonality	Polyclonal
Concentration	Lot specific
Conjugation	Unconjugated
Purification	Affinity purification
Dilution Range	WB:1:1000-1:2000 IHC-P:1:50-1:200 ELISA:Recommended starting concentration is 1 µg/mL. Please optimize the concentration based on your specific assay requirements.
Formulation	PBS with 0.01% Thimerosal, 50% Glycerol, pH 7.3.
Isotype	IgG
Molecular Weight	Protein Mw: 27kDa Observed Mw: 37kDa
Storage Instruction	Store at -20°C for up to 1 year from the date of receipt, and avoid repeat freeze-thaw cycles.

TARGET INFORMATION

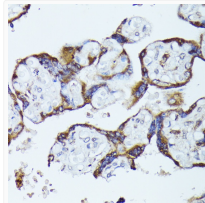
Gene ID	1155
Gene Symbol	TBCB
UniProt ID	TBCB_HUMAN
Immunogen Region	1-244
Immunogen Sequence	MEVTGVSAPTVTVFISSSLN TFRSEKRYSRSLTIAEFKCK LELLVGSASPSCMELELYGVD DKFYSKLDQEDALLGSPVD DGCRIHVIDHSGARLGEYED VSRVEKYTISQEAYDQRQDT VRSFLKRSKLGRYNEEERAQ QEAEAAQRLAEEKAQASSIP VGSRCVRAAGQSPRRGTVM YVGLTDFKPGYWIGVRYDEP LGKNDGVSNGKRYFECQAKY GAFVKPAVVTVGDFPEEDY
Specificity	Recombinant fusion protein containing a sequence corresponding to amino acids 1-244 of human TBCB (NP_001272.2).

ADDITIONAL INFORMATION

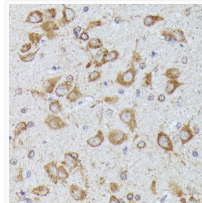
Note **STRICTLY FOR FURTHER SCIENTIFIC RESEARCH USE ONLY (RUO). MUST NOT TO BE USED IN DIAGNOSTIC OR THERAPEUTIC APPLICATIONS.**



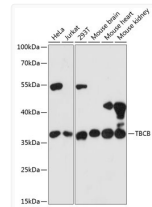
Immunohistochemistry analysis of TBCB in paraffin-embedded mouse kidney using TBCB Rabbit polyclonal antibody (STJ115213) at dilution of 1:100 (40x lens). Perform microwave antigen retrieval with 10 mM PBS buffer pH 7.2 before commencing with immunohistochemistry staining protocol.



Immunohistochemistry analysis of TBCB in paraffin-embedded human placenta using TBCB Rabbit polyclonal antibody (STJ115213) at dilution of 1:100 (40x lens). Perform microwave antigen retrieval with 10 mM PBS buffer pH 7.2 before commencing with immunohistochemistry staining protocol.



Immunohistochemistry analysis of TBCB in paraffin-embedded rat brain using TBCB Rabbit polyclonal antibody (STJ115213) at dilution of 1:100 (40x lens). Perform microwave antigen retrieval with 10 mM PBS buffer pH 7.2 before commencing with immunohistochemistry staining protocol.



Western blot analysis of various lysates using TBCB Rabbit polyclonal antibody (STJ115213) at 1:3000 dilution. Secondary antibody: HRP Goat Anti-Rabbit IgG (H+L) (STJS000856) at 1:10000 dilution. Lysates/proteins: 25 µg per lane. Blocking buffer: 3% nonfat dry milk in TBST. Detection: ECL Basic Kit. Exposure time: 30s.