

Anti-CFB antibody (80-420) (STJ115209)

GENERAL INFORMATION

Product Type	Primary antibodies
Applications	WB/ELISA
Host / Source	Rabbit
Reactivity	Mouse/Rat

PRODUCT PROPERTIES

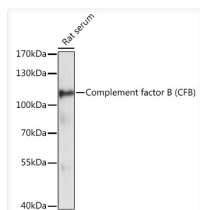
Clonality	Polyclonal
Concentration	Lot specific
Conjugation	Unconjugated
Purification	Affinity purification
Dilution Range	WB:1:1000-1:2000 ELISA:Recommended starting concentration is 1 μ g/mL. Please optimize the concentration based on your specific assay requirements.
Formulation	PBS with 0.01% Thimerosal, 50% Glycerol, pH 7.3.
Isotype	IgG
Molecular Weight	Protein Mw: 86kDa Observed Mw: 100kDa
Storage Instruction	Store at -20°C for up to 1 year from the date of receipt, and avoid repeat freeze-thaw cycles.

TARGET INFORMATION

Gene ID	629
Gene Symbol	CFB
UniProt ID	CFAB_HUMAN
Immunogen Region	80-420
Immunogen Sequence	GSWSTLKTQDQKTVRKAECR AIHCPRPDFENGEYWPRSP YYNVSDEISFHICYDGYTLRG SANRTCQVNGRWSGQTAICD NGAGYCSNPGIPIGTRKVGVS QYRLEDSVTYHCSRGLTLRG SQRRTCQEGGSWSGTEPSCQ DSFMYDTPQEVAEFLSSLT ETIEGVDAEDGHGPGEQQKR KIVLDPGSGSMNIYLVLDGSD SIGASNFTGAKKCLVNLIEK VASYGVKPRYGLVTYATYP
Specificity	Recombinant fusion protein containing a sequence corresponding to amino acids 80-420 of human Complement factor B (CFB) (NP_001701.2).

ADDITIONAL INFORMATION

Note **STRICTLY FOR FURTHER SCIENTIFIC RESEARCH USE ONLY (RUO). MUST NOT TO BE USED IN DIAGNOSTIC OR THERAPEUTIC APPLICATIONS.**



Western blot analysis of lysates from rat serum, using Complement factor B (CFB) Rabbit polyclonal antibody (STJ115209) at 1:3000 dilution. Secondary antibody: HRP Goat Anti-Rabbit IgG (H+L) (STJS000856) at 1:10000 dilution. Lysates/proteins: 25 μ g per lane. Blocking buffer: 3% nonfat dry milk in TBST. Detection: ECL Basic Kit. Exposure time: 10s.