

Anti-SLC25A38 antibody (1-304) (STJ115184)

GENERAL INFORMATION

Product Type	Primary antibodies
Applications	WB/IF/ICC/ELISA
Host / Source	Rabbit
Reactivity	Human/Mouse

PRODUCT PROPERTIES

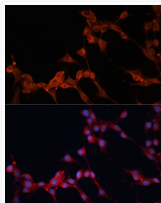
Clonality	Polyclonal
Concentration	Lot specific
Conjugation	Unconjugated
Purification	Affinity purification
Dilution Range	WB:1:500-1:2000 IF/CC:1:50-1:200 ELISA:Recommended starting concentration is 1 Mu g/mL. Please optimize the concentration based on your specific assay requirements.
Formulation	PBS with 0.05% Proclin300, 50% Glycerol, pH 7.3.
Isotype	IgG
Molecular Weight	Protein Mw: 34kDa Observed Mw: 33kDa
Storage Instruction	Store at -20°C for up to 1 year from the date of receipt, and avoid repeat freeze-thaw cycles.

TARGET INFORMATION

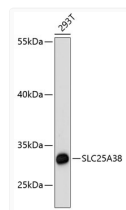
Gene ID	54977
Gene Symbol	SLC25A38
UniProt ID	S2538_HUMAN
Immunogen Region	1-304
Immunogen Sequence	MIQNSRPSLLQPQDVGDVTE TLMHPVIKAFLCGSISGTC STLLFQPLDLLKTRLQLQP SDHGSRRVGM LAVLLKVVRT ESLLGLWKGMSPSIVRCVPG
Specificity	Recombinant fusion protein containing a sequence corresponding to amino acids 1-100 of human SLC25A38 (NP_060345.2).

ADDITIONAL INFORMATION

Note STRICTLY FOR FURTHER SCIENTIFIC RESEARCH USE ONLY (RUO). MUST NOT TO BE USED IN DIAGNOSTIC OR THERAPEUTIC APPLICATIONS.



Immunofluorescence analysis of NIH/3T3 cells using SLC25A38 antibody (STJ115184) at dilution of 1:100. Blue: DAPI for nuclear staining.



Western blot analysis of extracts of 293T cells, using SLC25A38 antibody (STJ115184) at 1:3000 dilution. Secondary antibody: HRP Goat Anti-Rabbit IgG (H+L) (STJS000856) at 1:10000 dilution. Lysates/proteins: 25 Mu g per lane. Blocking buffer: 3% nonfat dry milk in TBST. Detection: ECL Basic Kit. Exposure time: 90s.