

Anti-GPKOW antibody (127-476) (STJ115180)

GENERAL INFORMATION

Product Type	Primary antibodies
Applications	WB/ELISA
Host / Source	Rabbit
Reactivity	Human/Mouse/Rat

PRODUCT PROPERTIES

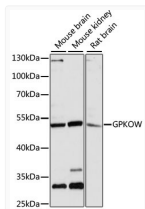
Clonality	Polyclonal
Concentration	Lot specific
Conjugation	Unconjugated
Purification	Affinity purification
Dilution Range	WB:1:500-1:2000 ELISA:Recommended starting concentration is 1 Mu g/mL. Please optimize the concentration based on your specific assay requirements.
Formulation	PBS with 0.01% Thimerosal, 50% Glycerol, pH 7.3.
Isotype	IgG
Molecular Weight	Protein Mw: 52kDa Observed Mw: 52kDa
Storage Instruction	Store at-20°C for up to 1 year from the date of receipt, and avoid repeat freeze-thaw cycles.

TARGET INFORMATION

Gene ID	27238
Gene Symbol	GPKOW
UniProt ID	GPKOW_HUMAN
Immunogen Region	127-476
Immunogen Sequence	TLAIPMIQKGCTPSGEGADS EPRAETVPEEANYEAVPVEA YGLAMLRLGMGWKPGEGIGRT FNQVVKPRVNSLRPKGLGLG ANLTEAQALTPTGPSRMPRP DEEQEKDKEDQPQGLVPGGA VVVLSGPHRGLYGKVEGLDP DNVRAMVRLAVGSRVVTVSE YYLRPVYQQEFDKNTLDLRQ QNGTASSRKTLWNQELYIQQ DNSERKRKHLPLDRQDGPAK SEKAAPRSQHWLHRDLRVR
Specificity	Recombinant fusion protein containing a sequence corresponding to amino acids 127-476 of human GPKOW (NP_056513.2).

ADDITIONAL INFORMATION

Note **STRICTLY FOR FURTHER SCIENTIFIC RESEARCH USE ONLY (RUO). MUST NOT TO BE USED IN DIAGNOSTIC OR THERAPEUTIC APPLICATIONS.**



Western blot analysis of various lysates using GPKOW Rabbit polyclonal antibody (STJ115180) at 1:3000 dilution. Secondary antibody: HRP Goat Anti-Rabbit IgG (H+L) (STJS000856) at 1:10000 dilution. Lysates/proteins: 25 Mu g per lane. Blocking buffer: 3% nonfat dry milk in TBST. Detection: ECL Enhanced Kit. Exposure time: 5s.