

Anti-MRPL45 antibody (57-306) (STJ115163)

GENERAL INFORMATION

Product Type	Primary antibodies
Applications	WB/IHC-P/IF/ICC/ELISA
Host / Source	Rabbit
Reactivity	Human/Mouse/Rat

PRODUCT PROPERTIES

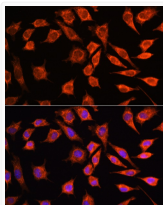
Clonality	Polyclonal
Concentration	Lot specific
Conjugation	Unconjugated
Purification	Affinity purification
Dilution Range	WB:1:500-1:2000 IHC-P:1:50-1:200 IF/CC:1:50-1:200 ELISA:Recommended starting concentration is 1 µg/mL. Please optimize the concentration based on your specific assay requirements.
Formulation	PBS with 0.01% Thimerosal, 50% Glycerol, pH 7.3.
Isotype	IgG
Molecular Weight	Protein Mw: 35kDa Observed Mw: 35kDa
Storage Instruction	Store at -20°C for up to 1 year from the date of receipt, and avoid repeat freeze-thaw cycles.

TARGET INFORMATION

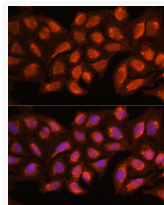
Gene Symbol	MRPL45 Uniprot ID= RM45_HUMAN "
Immunogen Region	57-306
Immunogen Sequence	MQHARKAGLVIPPEKSDRSI HLACTAGIFDAYVPEGDAR ISSLSKEGLIERTERMKKT ASQVSIRRIKDYDANFKIKD FPEKAKDIFIEAHLCLNNSD HDRLHLVTEHC FDPMTWDI KYKTVRWSFVESLEPSHVQ VRCSSMMNQGNVYGQITVRM HTRQTLAIYDRFGR LMYGGQE DVPKDVLEYVVFEEKLTNPY GSWRMHTKIVPPWAPPKQPI LKTVMI PGPQLKPEEEYEE
Specificity	Recombinant fusion protein containing a sequence corresponding to amino acids 57-306 of human MRPL45 (NP_115727.5).

ADDITIONAL INFORMATION

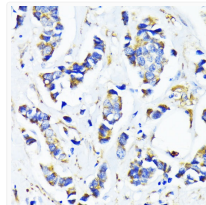
Note STRICTLY FOR FURTHER SCIENTIFIC RESEARCH USE ONLY (RUO). MUST NOT TO BE USED IN DIAGNOSTIC OR THERAPEUTIC APPLICATIONS.



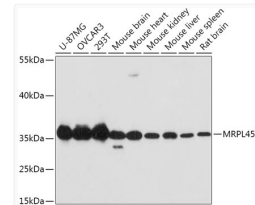
Immunofluorescence analysis of L929 cells using MRPL45 Rabbit polyclonal antibody (STJ115163) at dilution of 100 (40x lens). Secondary antibody: Cy3 Goat Anti-Rabbit IgG (H+L) at 1:500 dilution. Blue: DAPI for nuclear staining.



Immunofluorescence analysis of HeLa cells using MRPL45 Rabbit polyclonal antibody (STJ115163) at dilution of 100 (40x lens). Secondary antibody: Cy3 Goat Anti-Rabbit IgG (H+L) at 1:500 dilution. Blue: DAPI for nuclear staining.



Immunohistochemistry analysis of MRPL45 in paraffin-embedded human breast cancer using MRPL45 Rabbit polyclonal antibody (STJ115163) at dilution of 1:100 (40x lens). Perform microwave antigen retrieval with 10 mM PBS buffer pH 7.2 before commencing with immunohistochemistry staining protocol.



Western blot analysis of various lysates using MRPL45 Rabbit polyclonal antibody (STJ115163) at 1:1000 dilution. Secondary antibody: HRP Goat Anti-Rabbit IgG (H+L) (STJS000856) at 1:10000 dilution. Lysates/proteins: 25 µg per lane. Blocking buffer: 3% nonfat dry milk in TBST. Detection: ECL Basic Kit. Exposure time: 90s.