

## Anti-CRISPLD2 antibody (140-430) (STJ115161)

### GENERAL INFORMATION

Product Type	Primary antibodies
Applications	WB/ELISA
Host / Source	Rabbit
Reactivity	Mouse/Rat

### PRODUCT PROPERTIES

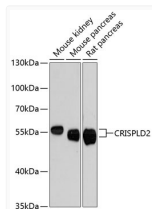
Clonality	Polyclonal
Concentration	Lot specific
Conjugation	Unconjugated
Purification	Affinity purification
Dilution Range	WB:1:500-1:2000 ELISA:Recommended starting concentration is 1 µg/mL. Please optimize the concentration based on your specific assay requirements.
Formulation	PBS with 0.01% Thimerosal, 50% Glycerol, pH 7.3.
Isotype	IgG
Molecular Weight	Protein Mw: 56kDa Observed Mw: 56kDa
Storage Instruction	Store at -20°C for up to 1 year from the date of receipt, and avoid repeat freeze-thaw cycles.

### TARGET INFORMATION

Gene ID	<a href="#">83716</a>
Gene Symbol	<a href="#">CRISPLD2</a>
UniProt ID	<a href="#">CRLD2_HUMAN</a>
Immunogen Region	140-430
Immunogen Sequence	YYPYSECNPWCPERCSGPMC THYTIQVWATTNKIGCAVNT CRKMTVWGEVWENAVYFVCN YSPKGNWIGEAPYKNGRPCS ECPPSYGGSCRNNLCYREET YTPKPETDEMNEVETAPIE ENHWLQPRVMPRTKPKKTS AVNYMTQVVRCDTKMKDRCK GSTCNRYQCPAGCLNHKAKI FGTLFYESSSSICRAAIHYG ILDDKGGGLVDITRNGKVPFF VKSERHGVQSLSKYKPSSS
Specificity	Recombinant fusion protein containing a sequence corresponding to amino acids 140-430 of human CRISPLD2 (NP_113664.1).

### ADDITIONAL INFORMATION

Note **STRICTLY FOR FURTHER SCIENTIFIC RESEARCH USE ONLY (RUO). MUST NOT TO BE USED IN DIAGNOSTIC OR THERAPEUTIC APPLICATIONS.**



Western blot analysis of various lysates using CRISPLD2 Rabbit polyclonal antibody (STJ115161) at 1:3000 dilution. Secondary antibody: HRP Goat Anti-Rabbit IgG (H+L) (STJS00856) at 1:10000 dilution. Lysates/proteins: 25 µg per lane. Blocking buffer: 3% nonfat dry milk in TBST. Detection: ECL Enhanced Kit. Exposure time: 90s.