

Anti-FAM208A antibody (700-1000) (STJ115153)

GENERAL INFORMATION

Product Type	Primary antibodies
Applications	WB/ELISA
Host / Source	Rabbit
Reactivity	Human

PRODUCT PROPERTIES

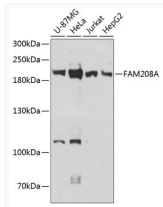
Clonality	Polyclonal
Concentration	Lot specific
Conjugation	Unconjugated
Purification	Affinity purification
Dilution Range	WB:1:500-1:2000 ELISA:Recommended starting concentration is 1 µg/mL. Please optimize the concentration based on your specific assay requirements.
Formulation	PBS with 0.09% Sodium Azide, 50% Glycerol, pH7.3.
Isotype	IgG
Molecular Weight	Protein Mw: 189kDa Observed Mw: 189kDa
Storage Instruction	Store at -20°C for up to 1 year from the date of receipt, and avoid repeat freeze-thaw cycles.

TARGET INFORMATION

Gene ID	23272
Gene Symbol	TASOR
UniProt ID	TASOR_HUMAN
Immunogen Region	700-1000
Immunogen Sequence	DTEDMRSKTVLKRKLEDLPE NMRKLAKTSNLSENCHLYEE SPQPIGSLGHADLRRQQQD TCNSGIADIHRLFNWLSETL ANARHSDASLTDVFNKALGL STDDAYEELRQKHEYELNST PDKKDYEQPTCAKVENAQFK GTQSLLEVDATSKYSVAIS TSEVGTDPHKLHLKEDPNLIS VNNFEDCSLCPSPVPIEHGFR RQQSKSNVVEETIHWKLIPI ITGGNARSPEDQLGKHGEK
Specificity	Recombinant fusion protein containing a sequence corresponding to amino acids 700-1000 of human FAM208A (NP_001106207.1).

ADDITIONAL INFORMATION

Note **STRICTLY FOR FURTHER SCIENTIFIC RESEARCH USE ONLY (RUO). MUST NOT TO BE USED IN DIAGNOSTIC OR THERAPEUTIC APPLICATIONS.**



Western blot analysis of various lysates using FAM208A Rabbit polyclonal antibody (STJ115153) at 1:3000 dilution. Secondary antibody: HRP Goat Anti-Rabbit IgG (H+L) (STJS00856) at 1:10000 dilution. Lysates/proteins: 25 µg per lane. Blocking buffer: 3% nonfat dry milk in TBST. Detection: ECL Basic Kit. Exposure time: 30s.