

Anti-SCYL2 antibody (1-300) (STJ115144)

GENERAL INFORMATION

Product Type	Primary antibodies
Applications	WB/IF/ICC/ELISA
Host / Source	Rabbit
Reactivity	Human/Mouse/Rat

PRODUCT PROPERTIES

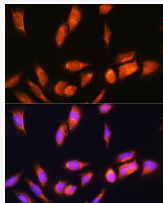
Clonality	Polyclonal
Concentration	Lot specific
Conjugation	Unconjugated
Purification	Affinity purification
Dilution Range	WB:1:500-1:2000 IF/CC:1:50-1:200 ELISA:Recommended starting concentration is 1 Mu g/mL. Please optimize the concentration based on your specific assay requirements.
Formulation	PBS with 0.01% Thimerosal, 50% Glycerol, pH 7.3.
Isotype	IgG
Molecular Weight	Protein Mw: 104kDa Observed Mw: 104kDa
Storage Instruction	Store at -20°C for up to 1 year from the date of receipt, and avoid repeat freeze-thaw cycles.

TARGET INFORMATION

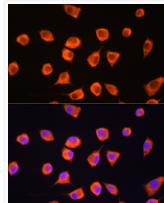
Gene ID	55681
Gene Symbol	SCYL2
UniProt ID	SCYL2_HUMAN
Immunogen Region	1-300
Immunogen Sequence	MESMLNKLKSTVTKVTADVT SAVMGNPVTREFDVGRHIAS GGNGLAWKIFNGTKKSTKQE VAVFVFDKKLIDKYQKFEKD QIIDSLKRGVQQLTRLRHPRL LTVQHPLEESRDCLAFCTE PVFASLANVLGNWENLPSPISPDIKDYKLYDVETKYGLLQ VSEGLSFLHSSVKMVMHGNIT PENIILNKSGAWKIMGFDFC VSSTNPSEQEPKFPCKEWDPLNPSLCLPNPEYLAPEYIL
Specificity	Recombinant fusion protein containing a sequence corresponding to amino acids 1-300 of human SCYL2 (NP_060458.3).

ADDITIONAL INFORMATION

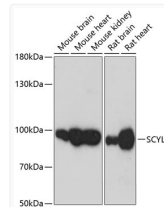
Note **STRICTLY FOR FURTHER SCIENTIFIC RESEARCH USE ONLY (RUO). MUST NOT TO BE USED IN DIAGNOSTIC OR THERAPEUTIC APPLICATIONS.**



Immunofluorescence analysis of U2OS cells using SCYL2 Rabbit polyclonal antibody (STJ115144) at dilution of 1:100. Secondary antibody: Cy3 Goat Anti-Rabbit IgG (H+L) at 1:500 dilution. Blue: DAPI for nuclear staining.



Immunofluorescence analysis of L929 cells using SCYL2 Rabbit polyclonal antibody (STJ115144) at dilution of 1:100. Secondary antibody: Cy3 Goat Anti-Rabbit IgG (H+L) at 1:500 dilution. Blue: DAPI for nuclear staining.



Western blot analysis of various lysates using SCYL2 Rabbit polyclonal antibody (STJ115144) at 1:3000 dilution. Secondary antibody: HRP Goat Anti-Rabbit IgG (H+L) (STJS000856) at 1:10000 dilution. Lysates/proteins: 25 Mu g per lane. Blocking buffer: 3% nonfat dry milk in TBST. Detection: ECL Basic Kit. Exposure time: 30s.