

Anti-SF3B6 antibody (1-125) (STJ115064)

GENERAL INFORMATION

Product Type	Primary antibodies
Applications	WB/ELISA
Host / Source	Rabbit
Reactivity	Human/Mouse

PRODUCT PROPERTIES

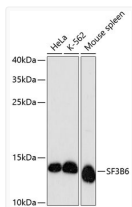
Clonality	Polyclonal
Concentration	Lot specific
Conjugation	Unconjugated
Purification	Affinity purification
Dilution Range	WB:1:500-1:2000 ELISA:Recommended starting concentration is 1 µg/mL. Please optimize the concentration based on your specific assay requirements.
Formulation	PBS with 0.01% Thimerosal, 50% Glycerol, pH 7.3.
Isotype	IgG
Molecular Weight	Protein Mw: 15kDa Observed Mw: 14kDa
Storage Instruction	Store at -20°C for up to 1 year from the date of receipt, and avoid repeat freeze-thaw cycles.

TARGET INFORMATION

Gene ID	51639
Gene Symbol	SF3B6
UniProt ID	SF3B6_HUMAN
Immunogen Region	1-125
Immunogen Sequence	MAMQAAKRANIRLPPEVNRI LYIRNLPYKITAEEYDIFG KYGPIRQIRVGNTPETRGTA YVYVEDIFDAKNACDHLGSGF NVCNRYLVVLYYNANRAFQK MDTKKKKEEQLKLLKEKYGIN TDPPK
Specificity	Recombinant fusion protein containing a sequence corresponding to amino acids 1-125 of human SF3B6 (NP_057131.1).

ADDITIONAL INFORMATION

Note STRICTLY FOR FURTHER SCIENTIFIC RESEARCH USE ONLY (RUO). MUST NOT TO BE USED IN DIAGNOSTIC OR THERAPEUTIC APPLICATIONS.



Western blot analysis of various lysates using SF3B6 Rabbit polyclonal antibody (STJ115064) at 1:3000 dilution. Secondary antibody: HRP Goat Anti-Rabbit IgG (H+L) (STJS000856) at 1:10000 dilution. Lysates/proteins: 25 µg per lane. Blocking buffer: 3% nonfat dry milk in TBST. Detection: ECL Basic Kit. Exposure time: 90s.