

Anti-ATP13A2 antibody (70-210) (STJ115050)

GENERAL INFORMATION

Product Type	Primary antibodies
Applications	WB/IF/ICC/ELISA
Host / Source	Rabbit
Reactivity	Human/Mouse/Rat

PRODUCT PROPERTIES

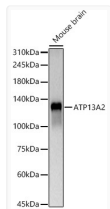
Clonality	Polyclonal
Concentration	Lot specific
Conjugation	Unconjugated
Purification	Affinity purification
Dilution Range	WB:1:100-1:500 IF/CC:1:50-1:200 ELISA:Recommended starting concentration is 1 Mu g/mL. Please optimize the concentration based on your specific assay requirements.
Formulation	PBS with 0.05% Proclin300, 50% Glycerol, pH 7.3.
Isotype	IgG
Molecular Weight	Protein Mw: 129kDa Observed Mw: 130kDa
Storage Instruction	Store at -20°C for up to 1 year from the date of receipt, and avoid repeat freeze-thaw cycles.

TARGET INFORMATION

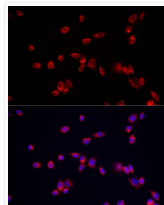
Gene ID	23400
Gene Symbol	ATP13A2
UniProt ID	AT132_HUMAN
Immunogen Region	70-210
Immunogen Sequence	LWGVRLRLRPCNLHAETLV IEIRDKEDSSWQLFTVQVQT EAIGEGSLEPSPQQAEDGR SQAAVGAVPEGAWKDTAQLH KSEEA VSVGQRVLRVYLFQ GQRYIWETQQAIFYQVSLLD HGRSCDDVHRSRHGLSLQDQ M
Specificity	Recombinant fusion protein containing a sequence corresponding to amino acids 70-210 of human ATP13A2 (NP_071372.1).

ADDITIONAL INFORMATION

Note **STRICTLY FOR FURTHER SCIENTIFIC RESEARCH USE ONLY (RUO). MUST NOT TO BE USED IN DIAGNOSTIC OR THERAPEUTIC APPLICATIONS.**



Western blot analysis of mouse brain, using ATP13A2 antibody (STJ115050) at 1:500 dilution. Secondary antibody: HRP Goat Anti-rabbit IgG (H+L) (STJS000856) at 1:10000 dilution. Lysates/proteins: 25 Mu g per lane. Blocking buffer: 3% non-fat dry milk in TBST. Detection: ECL Basic Kit. Exposure time: 60s.



Immunofluorescence analysis of NIH/3T3 cells using ATP13A2 rabbit polyclonal antibody (STJ115050) at dilution of 1:50 (40x lens). Blue: DAPI for nuclear staining.