

Anti-OVGP1 antibody (22-260) (STJ115003)

GENERAL INFORMATION

| | |
|---------------|--------------------|
| Product Type | Primary antibodies |
| Applications | WB/ELISA |
| Host / Source | Rabbit |
| Reactivity | Human/Mouse/Rat |

PRODUCT PROPERTIES

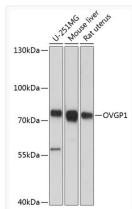
| | |
|---------------------|--|
| Clonality | Polyclonal |
| Concentration | Lot specific |
| Conjugation | Unconjugated |
| Purification | Affinity purification |
| Dilution Range | WB:1:500-1:2000 ELISA:Recommended starting concentration is 1 µg/mL. Please optimize the concentration based on your specific assay requirements. |
| Formulation | PBS with 0.01% Thimerosal, 50% Glycerol, pH 7.3. |
| Isotype | IgG |
| Molecular Weight | Protein Mw: 75kDa Observed Mw: 75kDa |
| Storage Instruction | Store at -20°C for up to 1 year from the date of receipt, and avoid repeat freeze-thaw cycles. |

TARGET INFORMATION

| | |
|--------------------|---|
| Gene ID | 5016 |
| Gene Symbol | OVGP1 |
| UniProt ID | OVGP1_HUMAN |
| Immunogen Region | 22-260 |
| Immunogen Sequence | HKLVCYFTNWAHSRPGPASI LPHDLDPFLCTHLIFAFASM NNNQIVAKDLQDEKILYPEF NKLKERNRELKTLISIGGWN FGTSRFTTMLSTFANREKFI ASVISLLRTHDFDGLDLFFL YPGLRGSPMHRWTFLEIE ELLFAFRKEALLTMRPRLLL SAAVSGVPHIVQTSYDVRFL GRLLDFINVLSYDLHGSWER FTGHNSPLFSLPEDPKSSAY AMNYWRKLGAPSEKLIMGI |
| Specificity | Recombinant fusion protein containing a sequence corresponding to amino acids 22-260 of human OVGP1 (NP_002548.3). |

ADDITIONAL INFORMATION

Note **STRICTLY FOR FURTHER SCIENTIFIC RESEARCH USE ONLY (RUO). MUST NOT TO BE USED IN DIAGNOSTIC OR THERAPEUTIC APPLICATIONS.**



Western blot analysis of various lysates using OVGP1 Rabbit polyclonal antibody (STJ115003) at 1:3000 dilution. Secondary antibody: HRP Goat Anti-Rabbit IgG (H+L) (STJS000856) at 1:10000 dilution. Lysates/proteins: 25 µg per lane. Blocking buffer: 3% nonfat dry milk in TBST. Detection: ECL Basic Kit. Exposure time: 15s.