

Anti-HAL antibody (1-200) (STJ114988)

GENERAL INFORMATION

Product Type	Primary antibodies
Applications	WB/IHC-P/IF/ICC/ELISA
Host / Source	Rabbit
Reactivity	Human/Mouse/Rat

PRODUCT PROPERTIES

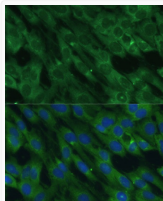
Clonality	Polyclonal
Concentration	Lot specific
Conjugation	Unconjugated
Purification	Affinity purification
Dilution Range	WB:1:500-1:2000 IHC-P:1:50-1:100 IF/CC:1:50-1:100 ELISA:Recommended starting concentration is 1 μ g/mL. Please optimize the concentration based on your specific assay requirements.
Formulation	PBS with 0.01% Thimerosal, 50% Glycerol, pH 7.3.
Isotype	IgG
Molecular Weight	Protein Mw: 73kDa Observed Mw: 73kDa
Storage Instruction	Store at -20°C for up to 1 year from the date of receipt, and avoid repeat freeze-thaw cycles.

TARGET INFORMATION

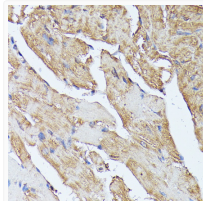
Gene ID	3034
Gene Symbol	HAL
UniProt ID	HUTH_HUMAN
Immunogen Region	1-200
Immunogen Sequence	MPRYTVHVRGEWLAVPCQDA QLTVGWLGREAVRRYIKNKP DNGGFTSVDDAHFLVRRCKG LGLLDNEDRLEVALENNEFV EVVIEGDAMSPDFIPISQPEG VYLYSKYREPEKYIELDGDR LTTEDLVNLGKGRYKIKLTP TAEKRVQKSREVIDSIIEK TVVYGITTFGFGKFARTVPI NKLQELQVNLVRSRSSGVGK
Specificity	Recombinant fusion protein containing a sequence corresponding to amino acids 1-200 of human HAL (NP_002099.1).

ADDITIONAL INFORMATION

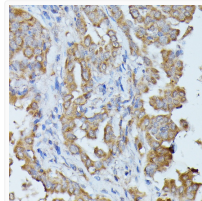
Note **STRICTLY FOR FURTHER SCIENTIFIC RESEARCH USE ONLY (RUO). MUST NOT TO BE USED IN DIAGNOSTIC OR THERAPEUTIC APPLICATIONS.**



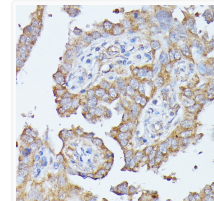
Immunofluorescence analysis of C6 cells using HAL Rabbit polyclonal antibody (STJ114988) at dilution of 1:100 (40x lens). Secondary antibody: Cy3 Goat Anti-Rabbit IgG (H+L) at 1:500 dilution. Blue: DAPI for nuclear staining.



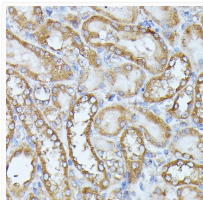
Immunohistochemistry analysis of HAL in paraffin-embedded mouse heart using HAL Rabbit polyclonal antibody (STJ114988) at dilution of 1:100 (40x lens). Perform microwave antigen retrieval with 10 mM PBS buffer pH 7.2 before commencing with immunohistochemistry staining protocol.



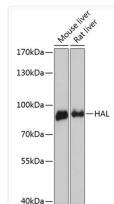
Immunohistochemistry analysis of HAL in paraffin-embedded human thyroid cancer using HAL Rabbit polyclonal antibody (STJ114988) at dilution of 1:100 (40x lens). Perform microwave antigen retrieval with 10 mM PBS buffer pH 7.2 before commencing with immunohistochemistry staining protocol.



Immunohistochemistry analysis of HAL in paraffin-embedded human lung cancer using HAL Rabbit polyclonal antibody (STJ114988) at dilution of 1:100 (40x lens). Perform microwave antigen retrieval with 10 mM PBS buffer pH 7.2 before commencing with immunohistochemistry staining protocol.



Immunohistochemistry analysis of HAL in paraffin-embedded rat kidney using HAL Rabbit polyclonal antibody (STJ114988) at dilution of 1:100 (40x lens). Perform microwave antigen retrieval with 10 mM PBS buffer pH 7.2 before commencing with immunohistochemistry staining protocol.



Western blot analysis of various lysates using HAL Rabbit polyclonal antibody (STJ114988) at 1:3000 dilution. Secondary antibody: HRP Goat Anti-Rabbit IgG (H+L) (STJS000856) at 1:10000 dilution. Lysates/proteins: 25 μ g per lane. Blocking buffer: 3% nonfat dry milk in TBST. Detection: ECL Enhanced Kit. Exposure time: 90s.