

Anti-EP300 antibody (1-270) (STJ114983)

GENERAL INFORMATION

Product Type	Primary antibodies
Applications	IHC-P/IF/ICC/ELISA
Host / Source	Rabbit
Reactivity	Human/Mouse/Rat

PRODUCT PROPERTIES

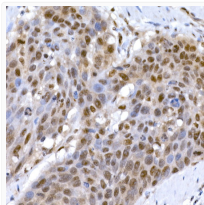
Clonality	Polyclonal
Concentration	Lot specific
Conjugation	Unconjugated
Purification	Affinity purification
Dilution Range	IHC-P:1:50-1:200 IF/CC:1:50-1:200 ELISA:Recommended starting concentration is 1 µg/mL. Please optimize the concentration based on your specific assay requirements.
Formulation	PBS with 0.05% Proclin300, 50% Glycerol, pH 7.3.
Isotype	IgG
Molecular Weight	Protein Mw: 264kDa Observed Mw: Refer to figures
Storage Instruction	Store at -20°C for up to 1 year from the date of receipt, and avoid repeat freeze-thaw cycles.

TARGET INFORMATION

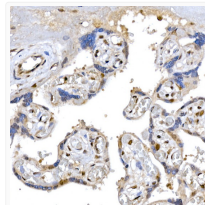
Gene ID	2033
Gene Symbol	EP300
UniProt ID	EP300_HUMAN
Immunogen Region	1-270
Immunogen Sequence	MAENVVEPGPPSAKRPKLSS PALSASASDGTDFGSLFDLE HDLPDELINSTELGLTNGGD INQLQTSLGMVQDAASKHKQ LSELLRSGSSPNLNMGVGGP GOVMASQAQQSSPGLGLINS MVKSPMTQAGLTSPNMGMT SGPNQGPTQSTGMMNSPVNQ PAMGMNTGMNAGMNPGLAA GNGQGIMPNQVMNGSIGAGR GRQNMQYPNPGMGSAGNLLT EPLQQGSPQMGGQTGLRGP
Specificity	Recombinant fusion protein containing a sequence corresponding to amino acids 1-270 of human EP300 (NP_001420.2).

ADDITIONAL INFORMATION

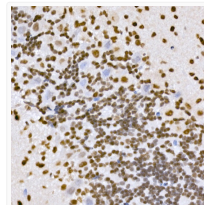
Note **STRICTLY FOR FURTHER SCIENTIFIC RESEARCH USE ONLY (RUO). MUST NOT TO BE USED IN DIAGNOSTIC OR THERAPEUTIC APPLICATIONS.**



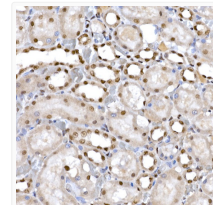
Immunohistochemistry analysis of paraffin-embedded human esophageal cancer using EP300 rabbit polyclonal antibody (STJ114983) at dilution of 1:100 (40x lens). Perform high pressure antigen retrieval with 10 mM citrate buffer pH 6.0 before commencing with immunohistochemistry staining protocol.



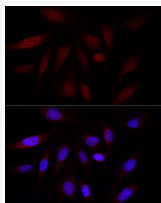
Immunohistochemistry analysis of paraffin-embedded human placenta using EP300 rabbit polyclonal antibody (STJ114983) at dilution of 1:100 (40x lens). Perform high pressure antigen retrieval with 10 mM citrate buffer pH 6.0 before commencing with immunohistochemistry staining protocol.



Immunohistochemistry analysis of paraffin-embedded mouse brain using EP300 rabbit polyclonal antibody (STJ114983) at dilution of 1:100 (40x lens). Perform high pressure antigen retrieval with 10 mM citrate buffer pH 6.0 before commencing with immunohistochemistry staining protocol.



Immunohistochemistry analysis of paraffin-embedded rat kidney using EP300 rabbit polyclonal antibody (STJ114983) at dilution of 1:100 (40x lens). Perform high pressure antigen retrieval with 10 mM citrate buffer pH 6.0 before commencing with immunohistochemistry staining protocol.



Immunofluorescence analysis of U2OS cells using EP300 rabbit polyclonal antibody (STJ114983) at dilution of 1:100 (40x lens). Blue: DAPI for nuclear staining.