

## Anti-DEC1 antibody (35-335) (STJ114981)

### GENERAL INFORMATION

Product Type	Primary antibodies
Applications	WB/ELISA
Host / Source	Rabbit
Reactivity	Human/Mouse/Rat

### PRODUCT PROPERTIES

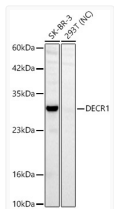
Clonality	Polyclonal
Concentration	Lot specific
Conjugation	Unconjugated
Purification	Affinity purification
Dilution Range	WB:1:500-1:2000 ELISA:Recommended starting concentration is 1 µg/mL. Please optimize the concentration based on your specific assay requirements.
Formulation	PBS with 0.05% Proclin300, 50% Glycerol, pH 7.3.
Isotype	IgG
Molecular Weight	Protein Mw: 36kDa Observed Mw: 33kDa
Storage Instruction	Store at -20°C for up to 1 year from the date of receipt, and avoid repeat freeze-thaw cycles.

### TARGET INFORMATION

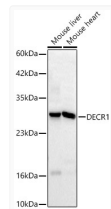
Gene ID	<a href="#">1666</a>
Gene Symbol	<a href="#">DEC1</a>
UniProt ID	<a href="#">DEC1_HUMAN</a>
Immunogen Region	35-335
Immunogen Sequence	NTEALQSKFFSPLQKAMLPP NSFQGVAFITGGGTGLGKG MTTLLSSLGAQCVIASRKMD VLKATAEQISSQTGNKVHAI QCDVRDPDMVQNTVSELIKV AGHPNIVINNAAGNFISPTE RLSPNAWKITDIVLNGTAF VTLEIGKLIKAQKGAFLS ITTIYAETGSGFVVPSASAK AGVEAMSKSLAAEWGKYGMR FNVIQPGPIKTKGAFSRLDP TGTFEKEMIGRIPCRLGT
Specificity	Recombinant fusion protein containing a sequence corresponding to amino acids 35-335 of human DEC1 (NP_001350.1).

### ADDITIONAL INFORMATION

Note **STRICTLY FOR FURTHER SCIENTIFIC RESEARCH USE ONLY (RUO). MUST NOT TO BE USED IN DIAGNOSTIC OR THERAPEUTIC APPLICATIONS.**



Western blot analysis of various lysates using DEC1 rabbit polyclonal antibody (STJ114981) at 1:2000 dilution. Secondary antibody:HRP Goat Anti-rabbit IgG (H+L) (STJS000856) at 1:10000 dilution. Lysates/proteins: 25 µg per lane. Blocking buffer: 3% non-fat dry milk in TBST. Detection:ECL Basic Kit. Negative control (NC) : 293T. Exposuretime: 30s.



Western blot analysis of various lysates using DEC1 rabbit polyclonal antibody (STJ114981) at 1:2000 dilution. Secondary antibody:HRP Goat Anti-rabbit IgG (H+L) (STJS000856) at 1:10000 dilution. Lysates/ proteins: 25 µg per lane. Blocking buffer: 3 % non-fat dry milk in TBST. Detection:ECL Basic Kit. Exposuretime: 30s.