

Anti-CEL antibody (350-550) (STJ114978)

GENERAL INFORMATION

Product Type	Primary antibodies
Applications	WB/ELISA
Host / Source	Rabbit
Reactivity	Mouse

PRODUCT PROPERTIES

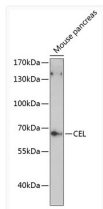
Clonality	Polyclonal
Concentration	Lot specific
Conjugation	Unconjugated
Purification	Affinity purification
Dilution Range	WB:1:500-1:2000 ELISA:Recommended starting concentration is 1 μ g/mL. Please optimize the concentration based on your specific assay requirements.
Formulation	PBS with 0.01% Thimerosal, 50% Glycerol, pH 7.3.
Isotype	IgG
Molecular Weight	Protein Mw: 79kDa Observed Mw: 67kDa
Storage Instruction	Store at -20°C for up to 1 year from the date of receipt, and avoid repeat freeze-thaw cycles.

TARGET INFORMATION

Gene ID	1056
Gene Symbol	CEL
UniProt ID	CEL_HUMAN
Immunogen Region	350-550
Immunogen Sequence	IDMPAINKGNKKVTEEDFYK LVSEFTITKGLRGAKTTFDV YTESWAQDPSQENKKKTVDV FETDVLFLVPTTEIALAQHRA NAKSAKTYAYLFSHPSPMPV YPKWVVGADHADDIQYVFGKP FATPTGYRQDRTVSKAMIA YWTNFAKTGDPNMGDSAVPT HWEPEYTTENSGYLEITKKMG SSSMKRSLRTNFLRYWTLTY L
Specificity	Recombinant fusion protein containing a sequence corresponding to amino acids 350-550 of human CEL (NP_001798.2).

ADDITIONAL INFORMATION

Note **STRICTLY FOR FURTHER SCIENTIFIC RESEARCH USE ONLY (RUO). MUST NOT TO BE USED IN DIAGNOSTIC OR THERAPEUTIC APPLICATIONS.**



Western blot analysis of lysates from mouse pancreas, using CEL Rabbit polyclonal antibody (STJ114978) at 1:3000 dilution. Secondary antibody: HRP Goat Anti-Rabbit IgG (H+L) (STJS000856) at 1:10000 dilution. Lysates/proteins: 25 μ g per lane. Blocking buffer: 3% nonfat dry milk in TBST. Detection: ECL Basic Kit. Exposure time: 90s.