

Anti-CALHM2 antibody (1-323) (STJ114975)

GENERAL INFORMATION

Product Type	Primary antibodies
Applications	WB/ELISA
Host / Source	Rabbit
Reactivity	Human/Rat

PRODUCT PROPERTIES

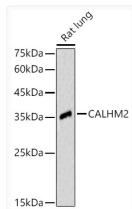
Clonality	Polyclonal
Concentration	Lot specific
Conjugation	Unconjugated
Purification	Affinity purification
Dilution Range	WB:1:100-1:500 ELISA:Recommended starting concentration is 1 μ g/mL. Please optimize the concentration based on your specific assay requirements.
Formulation	PBS with 0.05% Proclin300, 50% Glycerol, pH 7.3.
Isotype	IgG
Molecular Weight	Protein Mw: 36kDa Observed Mw: 36kDa
Storage Instruction	Store at -20°C for up to 1 year from the date of receipt, and avoid repeat freeze-thaw cycles.

TARGET INFORMATION

Gene ID	51063
Gene Symbol	CALHM2
UniProt ID	CAHM2_HUMAN
Immunogen Region	1-323
Immunogen Sequence	MAALIAENFRFLSLFFKSKD VMIFNGLVALGTVGSQELFS VVAFHPCSPARNYLYGLAA IGVPALVLFIIIGILNNHTW NLVAECQHRRTKNC SAAPTF LLLSSILGRAAVAPVTWSVI SLLRGEAYVCALSEFVDPSS LTAREEHFPSAHATEILARF PCKENPDNLSDFREEVSRRL RYESQLFGWLLIGVVAILVF LTKCLKHYCSPLSYRQEAYW AQYRANEDQLFQRTAEVHS
Specificity	Recombinant fusion protein containing a sequence corresponding to amino acids 1-323 of human CALHM2 (NP_057000.2).

ADDITIONAL INFORMATION

Note **STRICTLY FOR FURTHER SCIENTIFIC RESEARCH USE ONLY (RUO). MUST NOT TO BE USED IN DIAGNOSTIC OR THERAPEUTIC APPLICATIONS.**



Western blot analysis of Rat lung, using CALHM2 antibody (STJ114975) at 1:500 dilution. Secondary antibody: HRP Goat Anti-Rabbit IgG (H+L) (STJS000856) at 1:10000 dilution. Lysates/proteins: 25 μ g per lane. Blocking buffer: 3% nonfat dry milk in TBST. Detection: ECL Enhanced Kit. Exposure time: 60s.