

Anti-ITPA antibody (1-194) (STJ114927)

GENERAL INFORMATION

Product Type	Primary antibodies
Applications	WB/ELISA
Host / Source	Rabbit
Reactivity	Human/Mouse/Rat

PRODUCT PROPERTIES

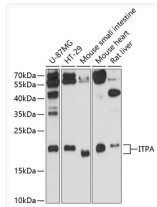
Clonality	Polyclonal
Concentration	Lot specific
Conjugation	Unconjugated
Purification	Affinity purification
Dilution Range	WB:1:500-1:2000 ELISA:Recommended starting concentration is 1 μ g/mL. Please optimize the concentration based on your specific assay requirements.
Formulation	PBS with 0.01% Thimerosal, 50% Glycerol, pH 7.3.
Isotype	IgG
Molecular Weight	Protein Mw: 21kDa Observed Mw: 21kDa
Storage Instruction	Store at -20°C for up to 1 year from the date of receipt, and avoid repeat freeze-thaw cycles.

TARGET INFORMATION

Gene ID	3704
Gene Symbol	ITPA
UniProt ID	ITPA_HUMAN
Immunogen Region	1-194
Immunogen Sequence	MAASLVGKKIVFTGNACKL EEVVQILGDKFPCTLVAQKI DLPEYQGEPDEISIQKCQEA VRVQGGPVLVEDTCLCFNAL GGLPGPYIKWFLEKLPKPEGL HQLLAGFEDKSAYALCTFAL STGDPSQPVRLFRGRTSGRI VAPRGCQDFGWDFCFQPDGY EQTYAEMPKAEKNAVSHRFR ALLELQEYFGSLAA
Specificity	Recombinant fusion protein containing a sequence corresponding to amino acids 1-194 of human ITPA (NP_258412.1).

ADDITIONAL INFORMATION

Note **STRICTLY FOR FURTHER SCIENTIFIC RESEARCH USE ONLY (RUO). MUST NOT TO BE USED IN DIAGNOSTIC OR THERAPEUTIC APPLICATIONS.**



Western blot analysis of various lysates using ITPA Rabbit polyclonal antibody (STJ114927) at 1:3000 dilution. Secondary antibody: HRP Goat Anti-Rabbit IgG (H+L) (STJS000856) at 1:10000 dilution. Lysates/proteins: 25 μ g per lane. Blocking buffer: 3% nonfat dry milk in TBST. Detection: ECL Enhanced Kit. Exposure time: 90s.