

Anti-GCLC antibody (1-252) (STJ114916)

GENERAL INFORMATION

Product Type	Primary antibodies
Applications	WB/IF/ICC/ELISA
Host / Source	Rabbit
Reactivity	Human/Mouse/Rat

PRODUCT PROPERTIES

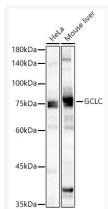
Clonality	Polyclonal
Concentration	Lot specific
Conjugation	Unconjugated
Purification	Affinity purification
Dilution Range	WB:1:500-1:3000 IF/CC:1:50-1:200 ELISA:Recommended starting concentration is 1 µg/mL. Please optimize the concentration based on your specific assay requirements.
Formulation	PBS with 0.05% Proclin300, 50% Glycerol, pH 7.3.
Isotype	IgG
Molecular Weight	Protein Mw: 73kDa Observed Mw: 73kDa
Storage Instruction	Store at -20°C for up to 1 year from the date of receipt, and avoid repeat freeze-thaw cycles.

TARGET INFORMATION

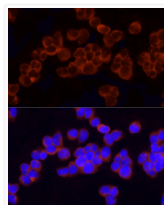
Gene ID	2729
Gene Symbol	GCLC
UniProt ID	GSH1_HUMAN
Immunogen Region	1-252
Immunogen Sequence	MGLLSQGSPLSWEETKRHAD HVRRHGILQFLHIYHAVKDR HKDVLKKGDEVEYMLVSFDH ENKKVRLVLSGEKVLETLQE KGERTNPNHPTLWRPEYGSY MIEGTPGQPYGGTMSEFNTV EANMRKRKREATSILEENQA LCTITSPRLGCPGFTLPEV KPNPVEGGASKSLFFPDEAI NKHPRFSTLTRNIRHRRGK VVINVPFKDKNTPSPFIET FTEDEASRASKPDHIYMD
Specificity	Recombinant fusion protein containing a sequence corresponding to amino acids 1-252 of human GCLC (NP_001489.1).

ADDITIONAL INFORMATION

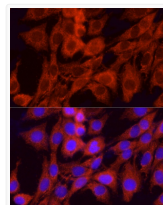
Note STRICTLY FOR FURTHER SCIENTIFIC RESEARCH USE ONLY (RUO). MUST NOT TO BE USED IN DIAGNOSTIC OR THERAPEUTIC APPLICATIONS.



Western blot analysis of various lysates, using GCLC rabbit polyclonal antibody (STJ114916) at 1:1000 dilution. Secondary antibody: HRP Goat Anti-rabbit IgG (H+L) (STJS000856) at 1:10000 dilution. Lysates/proteins: 25µg per lane. Blocking buffer: 3% non-fat dry milk in TBST. Detection: ECL Basic Kit. Exposure time: 1s.



Immunofluorescence analysis of Jurkat cells using GCLC rabbit polyclonal antibody (STJ114916) at dilution of 1:50 (40x lens). Blue: DAPI for nuclear staining.



Immunofluorescence analysis of PC-12 cells using GCLC rabbit polyclonal antibody (STJ114916) at dilution of 1:50 (40x lens). Blue: DAPI for nuclear staining.