

Anti-ACTA2 antibody (1-377) (STJ114915)

GENERAL INFORMATION

Product Type	Primary antibodies
Applications	WB/IHC-P/IF/ICC/ELISA
Host / Source	Rabbit
Reactivity	Human/Mouse/Rat

PRODUCT PROPERTIES

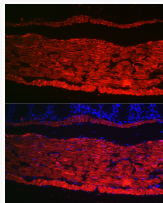
Clonality	Polyclonal
Concentration	Lot specific
Conjugation	Unconjugated
Purification	Affinity purification
Dilution Range	WB:1:500-1:1000 IHC-P:1:500-1:1000 IF/ICC:1:50-1:200 ELISA:Recommended starting concentration is 1 μ g/mL. Please optimize the concentration based on your specific assay requirements.
Formulation	PBS with 0.05% Proclin300, 50% Glycerol, pH 7.3.
Isotype	IgG
Molecular Weight	Protein Mw: 42kDa Observed Mw: 42kDa
Storage Instruction	Store at -20°C for up to 1 year from the date of receipt, and avoid repeat freeze-thaw cycles.

TARGET INFORMATION

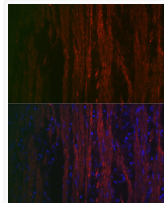
Gene ID	59
Gene Symbol	ACTA2
UniProt ID	ACTA_HUMAN
Immunogen Region	1-377
Immunogen Sequence	MCEEDSTALVCDNGSGLCK AGFAGDDAPRAVFPISIVGRP RHQGVVMVGMGQKDSYVGDEA QSKRGILTLYPIEHGIITN WDDMEKIWHHSFYNELRVAP EEHPTLLTEAPLNPKANREK MTQI
Specificity	Recombinant fusion protein containing a sequence corresponding to amino acids 1-100 of human Alpha-Smooth Muscle Actin (ACTA2) (NP_001604.1).

ADDITIONAL INFORMATION

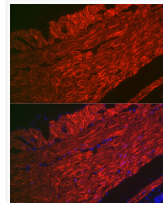
Note **STRICTLY FOR FURTHER SCIENTIFIC RESEARCH USE ONLY (RUO). MUST NOT TO BE USED IN DIAGNOSTIC OR THERAPEUTIC APPLICATIONS.**



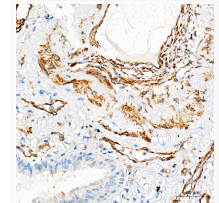
Immunofluorescence analysis of paraffin-embedded mouse colon using Alpha-Smooth Muscle Actin (ACTA2) Rabbit polyclonal antibody (STJ114915) at dilution of 1:100 (40x lens). Secondary antibody: Cy3 Goat Anti-Rabbit IgG (H+L) at 1:500 dilution. Blue: DAPI for nuclear staining.



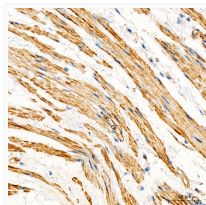
Immunofluorescence analysis of paraffin-embedded human smooth muscle using Alpha-Smooth Muscle Actin (ACTA2) Rabbit polyclonal antibody (STJ114915) at dilution of 1:100 (40x lens). Secondary antibody: Cy3 Goat Anti-Rabbit IgG (H+L) at 1:500 dilution. Blue: DAPI for nuclear staining.



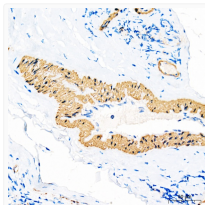
Immunofluorescence analysis of paraffin-embedded rat rectum using Alpha-Smooth Muscle Actin (ACTA2) Rabbit polyclonal antibody (STJ114915) at dilution of 1:100 (40x lens). Secondary antibody: Cy3 Goat Anti-Rabbit IgG (H+L) at 1:500 dilution. Blue: DAPI for nuclear staining.



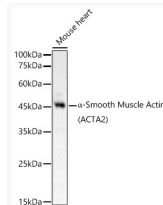
Immunohistochemistry analysis of Alpha-Smooth Muscle Actin (ACTA2) in paraffin-embedded Human lung tissue using Alpha-Smooth Muscle Actin (ACTA2) Rabbit polyclonal antibody (STJ114915) at a dilution of 1:1000 (40x lens). High pressure antigen retrieval was performed with 0.01 M Tris-EDTA buffer (pH 9.0) prior to immunohistochemistry staining.



Immunohistochemistry analysis of Alpha-Smooth Muscle Actin (ACTA2) in paraffin-embedded Human esophagus tissue using Alpha-Smooth Muscle Actin (ACTA2) Rabbit polyclonal antibody (STJ114915) at a dilution of 1:1000 (40x lens). High pressure antigen retrieval was performed with 0.01 M Tris-EDTA buffer (pH 9.0) prior to immunohistochemistry staining.



Immunohistochemistry analysis of Alpha-Smooth Muscle Actin (ACTA2) in paraffin-embedded Human tonsil tissue using Alpha-Smooth Muscle Actin (ACTA2) Rabbit polyclonal antibody (STJ114915) at a dilution of 1:1000 (40x lens). High pressure antigen retrieval was performed with 0.01 M Tris-EDTA buffer (pH 9.0) prior to immunohistochemistry staining.



Western blot analysis of lysates from Mouse heart, using Alpha-Smooth Muscle Actin (ACTA2) Rabbit polyclonal antibody (STJ114915) at 1:800 dilution. Secondary antibody: HRP Goat Anti-Rabbit IgG (H+L) (STJS000856) at 1:10000 dilution. Lysates/proteins: 25 μ g per lane. Blocking buffer: 3% nonfat dry milk in TBST. Detection: ECL Basic Kit. Exposure time: 10s.