

Anti-BIRC2 antibody (331-618) (STJ114903)

GENERAL INFORMATION

Product Type	Primary antibodies
Applications	WB/IHC-P/IF/ICC/ELISA
Host / Source	Rabbit
Reactivity	Human/Mouse/Rat

PRODUCT PROPERTIES

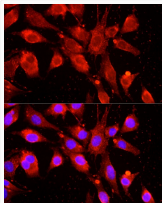
Clonality	Polyclonal
Concentration	Lot specific
Conjugation	Unconjugated
Purification	Affinity purification
Dilution Range	WB:1:500-1:1000 IHC-P:1:50-1:200 IF/ICC:1:50-1:100 ELISA:Recommended starting concentration is 1 µg/mL. Please optimize the concentration based on your specific assay requirements.
Formulation	PBS with 0.02% Sodium Azide, 50% Glycerol, pH 7.3.
Isotype	IgG
Molecular Weight	Protein Mw: 70kDa Observed Mw: 70kDa
Storage Instruction	Store at -20°C for up to 1 year from the date of receipt, and avoid repeat freeze-thaw cycles.

TARGET INFORMATION

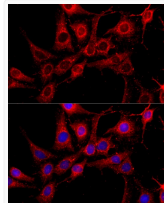
Gene ID	329
Gene Symbol	BIRC2
UniProt ID	BIRC2_HUMAN
Immunogen Region	331-618
Immunogen Sequence	PRCEFLIRMKGQEFVDEIQG RYPHLLLEQLLSTSDTTGEEEN ADPPIIHFGPGESSSEDAVM MNTPVVKSALMGFNRLVVK QTVQSKILTT
Specificity	Recombinant fusion protein containing a sequence corresponding to amino acids 331-420 of human cIAP1 (NP_001157.1).

ADDITIONAL INFORMATION

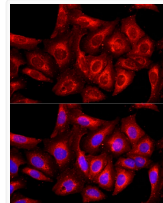
Note **STRICTLY FOR FURTHER SCIENTIFIC RESEARCH USE ONLY (RUO). MUST NOT TO BE USED IN DIAGNOSTIC OR THERAPEUTIC APPLICATIONS.**



Immunofluorescence analysis of BALA-3T3 cells using cIAP1 rabbit polyclonal antibody (STJ114903) at dilution of 1:100 (40x lens). Blue: DAPI for nuclear staining.



Immunofluorescence analysis of C6 cells using cIAP1 rabbit polyclonal antibody (STJ114903) at dilution of 1:100 (40x lens). Blue: DAPI for nuclear staining.



Immunofluorescence analysis of U2OS cells using cIAP1 rabbit polyclonal antibody (STJ114903) at dilution of 1:100 (40x lens). Blue: DAPI for nuclear staining.