

Anti-NF2 antibody (477-576) (STJ114897)

GENERAL INFORMATION

Product Type	Primary antibodies
Applications	WB/IF/ICC/IP/ELISA
Host / Source	Rabbit
Reactivity	Human/Mouse/Rat

PRODUCT PROPERTIES

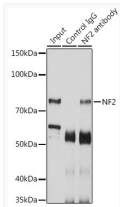
Clonality	Polyclonal
Concentration	Lot specific
Conjugation	Unconjugated
Purification	Affinity purification
Dilution Range	WB:1:500-1:2000 IF/CC:1:50-1:200 IP:0.5 Mu g-4 Mu g antibody for 200 Mu g-400 Mu g extracts of whole cells ELISA:Recommended starting concentration is 1 Mu g/mL. Please optimize the concentration based on your specific assay requirements
Formulation	PBS with 0.02% Sodium Azide, 50% Glycerol, pH 7.3.
Isotype	IgG
Molecular Weight	Protein Mw: 70kDa Observed Mw: 73kDa
Storage Instruction	Store at -20°C for up to 1 year from the date of receipt, and avoid repeat freeze-thaw cycles.

TARGET INFORMATION

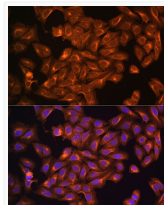
Gene ID	4771
Gene Symbol	NF2
UniProt ID	MERL_HUMAN
Immunogen Region	477-576
Immunogen Sequence	TKPTYPPMNPPIPAPLPDIP SFNLIGDSL SFDKDTDMKR LSMEIEKEKVEYMEKSKHLQ EQLNELKTEIEALKKERET ALDILHNENSDRGGSSKHNT
Specificity	Recombinant fusion protein containing a sequence corresponding to amino acids 477-576 of human NF2 (NP_000259.1).

ADDITIONAL INFORMATION

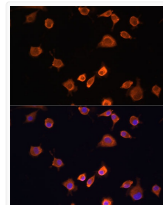
Note **STRICTLY FOR FURTHER SCIENTIFIC RESEARCH USE ONLY (RUO). MUST NOT TO BE USED IN DIAGNOSTIC OR THERAPEUTIC APPLICATIONS.**



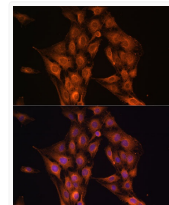
Immunoprecipitation analysis of 200 Mu g extracts of SKOV3 cells using 3 Mu g [KD Validated] NF2 Rabbit polyclonal antibody (STJ114897). Western blot was performed from the immunoprecipitate using NF2 antibody (STJ114897) at a dilution of 1:1000.



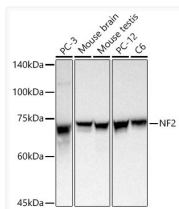
Immunofluorescence analysis of U2OS cells using [KD Validated] NF2 Rabbit polyclonal antibody (STJ114897) at dilution of 1:100. Blue: DAPI for nuclear staining.



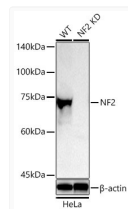
Immunofluorescence analysis of L929 cells using [KD Validated] NF2 Rabbit polyclonal antibody (STJ114897) at dilution of 1:100. Blue: DAPI for nuclear staining.



Immunofluorescence analysis of C6 cells using [KD Validated] NF2 Rabbit polyclonal antibody (STJ114897) at dilution of 1:100. Blue: DAPI for nuclear staining.



Western blot analysis of various lysates using [KD Validated] NF2 Rabbit polyclonal antibody (STJ114897) at 1:1000 dilution incubated overnight at 4 °C. Secondary antibody: HRP-conjugated Goat anti-Rabbit IgG (H+L) (STJS000856) at 1:10000 dilution. Lysates/proteins: 25 Mu g per lane. Blocking buffer: 3% nonfat dry milk in TBST. Detection: ECL Basic KitExposure time: 30 s.



Western blot analysis of lysates from wild type (WT) and NF2 knockdown (KD) HeLa cells using [KD Validated] NF2 Rabbit polyclonal antibody (STJ114897) at 1:1000 dilution incubated overnight at 4 °C. Secondary antibody: HRP-conjugated Goat anti-Rabbit IgG (H+L) (STJS000856) at 1:10000 dilution. Lysates/proteins: 25 Mu g per lane. Blocking buffer: 3% nonfat dry milk in TBST. Detection: ECL Basic KitExposure time: 180 s.