

Anti-CHEK2 antibody (1-220) (STJ114888)

GENERAL INFORMATION

| | |
|---------------|--------------------|
| Product Type | Primary antibodies |
| Applications | WB/IF/ICC/IP/ELISA |
| Host / Source | Rabbit |
| Reactivity | Human |

PRODUCT PROPERTIES

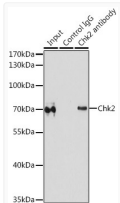
| | |
|---------------------|--|
| Clonality | Polyclonal |
| Concentration | Lot specific |
| Conjugation | Unconjugated |
| Purification | Affinity purification |
| Dilution Range | WB:1:500-1:1000 IF/CC:1:50-1:200 IP:0.5 Mu g-4 Mu g antibody for 200 Mu g-400 Mu g extracts of whole cells ELISA:Recommended starting concentration is 1 Mu g/mL. Please optimize the concentration based on your specific assay requirements |
| Formulation | PBS with 0.02% Sodium Azide, 50% Glycerol, pH 7.3. |
| Isotype | IgG |
| Molecular Weight | Protein Mw: 61kDa Observed Mw: 65kDa |
| Storage Instruction | Store at -20°C for up to 1 year from the date of receipt, and avoid repeat freeze-thaw cycles. |

TARGET INFORMATION

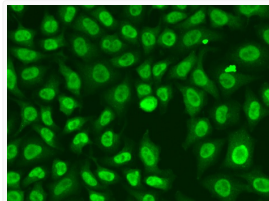
| | |
|--------------------|--|
| Gene ID | 11200 |
| Gene Symbol | CHEK2 |
| UniProt ID | CHK2_HUMAN |
| Immunogen Region | 1-220 |
| Immunogen Sequence | MSRES DVEAQQSHGSSACSQ PHGSVTQSQGSSSSQSGISS SSTSTMPNSSQSSSHSSSGTL SSLETVSTQELYSIPEDQEP EDQEPEPTPAPWARLWALQ DGFANLECVNDNYWFGDRKDS CEYCFDEPLLKRTDKYRTYS KKHFRIFREVGPKNSYIAYI EDHSGNGTFVNTLGVGKGR RPLNNNSEIALSLSRNKVFV FFDLTVDDQSVYPKALRDEY |
| Specificity | Recombinant fusion protein containing a sequence corresponding to amino acids 1-220 of human Chk2 (NP_009125.1). |

ADDITIONAL INFORMATION

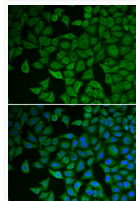
Note **STRICTLY FOR FURTHER SCIENTIFIC RESEARCH USE ONLY (RUO). MUST NOT TO BE USED IN DIAGNOSTIC OR THERAPEUTIC APPLICATIONS.**



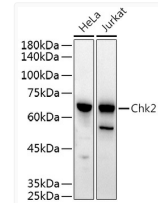
Immunoprecipitation analysis of 200 Mu g extracts of MCF-7 cells using 1 Mu g Chk2 antibody (STJ114888). Western blot was performed from the immunoprecipitate using Chk2 antibody (STJ114888) at a dilution of 1:1000.



Immunofluorescence analysis of A549 cells using Chk2 Rabbit polyclonal antibody (STJ114888). Secondary antibody: Cy3 Goat Anti-Rabbit IgG (H+L) at 1:500 dilution.



Immunofluorescence analysis of HeLa cells using Chk2 Rabbit polyclonal antibody (STJ114888). Secondary antibody: Cy3 Goat Anti-Rabbit IgG (H+L) at 1:500 dilution. Blue: DAPI for nuclear staining.



Western blot analysis of various lysates using Chk2 Rabbit polyclonal antibody (STJ114888) at 1:500 dilution. Secondary antibody: HRP Goat Anti-Rabbit IgG (H+L) (STJS000856) at 1:10000 dilution. Lysates/proteins: 25 Mu g per lane. Blocking buffer: 3% nonfat dry milk in TBST. Detection: ECL Basic Kit. Exposure time: 30s.