

## Anti-MAP2 antibody (1-118) (STJ114887)

### GENERAL INFORMATION

Product Type	Primary antibodies
Applications	WB/IHC-P/IF/ICC/ELISA
Host / Source	Rabbit
Reactivity	Mouse/Rat

### PRODUCT PROPERTIES

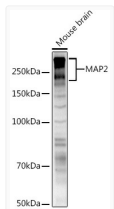
Clonality	Polyclonal
Concentration	Lot specific
Conjugation	Unconjugated
Purification	Affinity purification
Dilution Range	WB:1:100-1:500 IHC-P:1:50-1:200 IF/ICC:1:50-1:200 ELISA:Recommended starting concentration is 1 Mu g/mL. Please optimize the concentration based on your specific assay requirements.
Formulation	PBS with 0.05% Proclin300, 50% Glycerol, pH 7.3.
Isotype	IgG
Molecular Weight	Protein Mw: 200kDa Observed Mw: 220-280kd (MAP2A, MAP2B)
Storage Instruction	Store at -20°C for up to 1 year from the date of receipt, and avoid repeat freeze-thaw cycles.

### TARGET INFORMATION

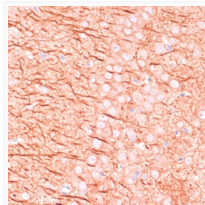
Gene ID	<a href="#">4133</a>
Gene Symbol	<a href="#">MAP2</a>
UniProt ID	<a href="#">MTAP2_HUMAN</a>
Immunogen Region	1-118
Immunogen Sequence	MADERKDEAKAPHWTSAPLT EASAHSHPPEIKDQGGAGEG LVRSANGFPYREDEEGAFGE HGSQGTYSNTKENGINGELT SADRETAEEVSARIVQVVTA EAVAVLKGEQEKEAQHKD
Specificity	Recombinant fusion protein containing a sequence corresponding to amino acids 1-118 of human MAP2 (NP_002365.3).

### ADDITIONAL INFORMATION

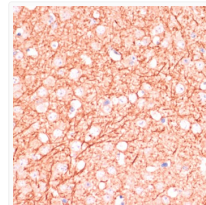
Note **STRICTLY FOR FURTHER SCIENTIFIC RESEARCH USE ONLY (RUO). MUST NOT TO BE USED IN DIAGNOSTIC OR THERAPEUTIC APPLICATIONS.**



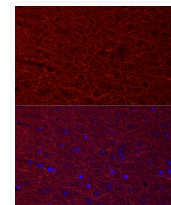
Western blot analysis of extracts of mouse brain, using MAP2 rabbit polyclonal antibody (STJ114887) at 1:500 dilution. Secondary antibody: HRP Goat Anti-rabbit IgG (H+L) (STJS00856) at 1:10000 dilution. Lysates/proteins: 25 Mu g per lane. Blocking buffer: 3% non-fat dry milk in TBST. Detection: ECL Basic Kit. Exposure time: 180s.



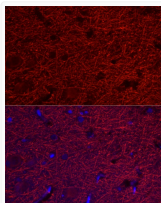
Immunohistochemistry analysis of paraffin-embedded rat brain using MAP2 antibody (STJ114887) at dilution of 1:100 (40x lens). Perform microwave antigen retrieval with 10 mM PBS buffer pH 7. 2 before commencing with immunohistochemistry staining protocol.



Immunohistochemistry analysis of paraffin-embedded mouse brain using MAP2 antibody (STJ114887) at dilution of 1:100 (40x lens). Perform microwave antigen retrieval with 10 mM PBS buffer pH 7. 2 before commencing with immunohistochemistry staining protocol.



Immunofluorescence analysis of mouse brain cells using MAP2 rabbit polyclonal antibody (STJ114887) at dilution of 1:20 (40x lens). Blue: DAPI for nuclear staining.



Immunofluorescence analysis of rat brain cells using MAP2 rabbit polyclonal antibody (STJ114887) at dilution of 1:20 (40x lens). Blue: DAPI for nuclear staining.