

## Anti-PECAM1 antibody (630-738) (STJ114880)

### GENERAL INFORMATION

Product Type	Primary antibodies
Applications	WB/IHC-P/IF/ICC
Host / Source	Rabbit
Reactivity	Human/Mouse

### PRODUCT PROPERTIES

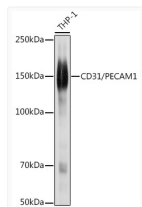
Clonality	Polyclonal
Concentration	Lot specific
Conjugation	Unconjugated
Purification	Affinity purification
Dilution Range	WB:1:500-1:1000 IHC-P:1:50-1:200 IF/ICC:1:50-1:200
Formulation	PBS with 0.09% Sodium Azide, 50% Glycerol, pH7.3.
Isotype	IgG
Molecular Weight	Protein Mw: 83kDa Observed Mw: 140kDa
Storage Instruction	Store at -20°C for up to 1 year from the date of receipt, and avoid repeat freeze-thaw cycles.

### TARGET INFORMATION

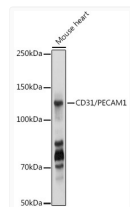
Gene ID	<a href="#">5175</a>
Gene Symbol	<a href="#">PECAM1</a>
UniProt ID	<a href="#">PECA1_HUMAN</a>
Immunogen Region	630-738
Immunogen Sequence	AKQMPVEMSRPAVPLLSNN EKMSDPNMEANSHYGHNDV RNHAMKPINDNKEPLNSDVQ YTEVQVSSAESHKDLGKKDT ETVYSEVRKAVPDAVESRYS RTEGSLDGT
Specificity	Recombinant fusion protein containing a sequence corresponding to amino acids 630-738 of CD31/PECAM (NP_000433.4).

### ADDITIONAL INFORMATION

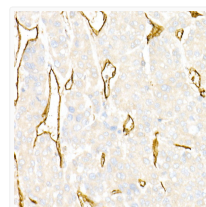
Note STRICTLY FOR FURTHER SCIENTIFIC RESEARCH USE ONLY (RUO). MUST NOT TO BE USED IN DIAGNOSTIC OR THERAPEUTIC APPLICATIONS.



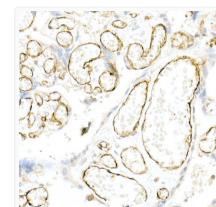
Western blot analysis of extracts of THP-1 cells, using CD31/PECAM1 antibody (STJ114880) at 1:1000 dilution. Secondary antibody: HRP Goat Anti-rabbit IgG (H+L) (STJS000856) at 1:10000 dilution. Lysates/proteins: 25 Mu g per lane. Blocking buffer: 3% non-fat dry milk in TBST. Detection: ECL Basic Kit. Exposure time: 1s.



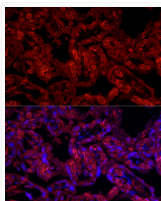
Western blot analysis of extracts of mouse heart, using CD31/PECAM1 antibody (STJ114880) at 1:1000 dilution. Secondary antibody: HRP Goat Anti-rabbit IgG (H+L) (STJS000856) at 1:10000 dilution. Lysates/proteins: 25 Mu g per lane. Blocking buffer: 3% non-fat dry milk in TBST. Detection: ECL Basic Kit. Exposure time: 1s.



Immunohistochemistry analysis of paraffin-embedded human liver cancer using CD31/PECAM1 rabbit polyclonal antibody (STJ114880) at dilution of 1:50 (40x lens). Perform high pressure antigen retrieval with 10 mM citrate buffer pH 6.0 before commencing with immunohistochemistry staining protocol.



Immunohistochemistry analysis of paraffin-embedded human placenta using CD31/PECAM1 rabbit polyclonal antibody (STJ114880) at dilution of 1:50 (40x lens). Perform high pressure antigen retrieval with 10 mM citrate buffer pH 6.0 before commencing with immunohistochemistry staining protocol.



Immunofluorescence analysis of human placenta cells using CD31/PECAM1 rabbit polyclonal antibody (STJ114880) at dilution of 1:50 (40x lens). Blue: DAPI for nuclear staining.