

## Anti-CD4 antibody (26-200) (STJ114879)

### GENERAL INFORMATION

Product Type	Primary antibodies
Applications	WB/IF/ICC/ELISA
Host / Source	Rabbit
Reactivity	Human/Mouse/Rat

### PRODUCT PROPERTIES

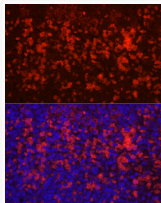
Clonality	Polyclonal
Concentration	Lot specific
Conjugation	Unconjugated
Purification	Affinity purification
Dilution Range	WB:1:500-1:1000 IF/CC:1:50-1:200 ELISA:Recommended starting concentration is 1 Mu g/mL. Please optimize the concentration based on your specific assay requirements.
Formulation	PBS with 0.09% Sodium Azide, 50% Glycerol, pH 7.3.
Isotype	IgG
Molecular Weight	Protein Mw: 51kDa Observed Mw: 51kDa
Storage Instruction	Store at -20°C for up to 1 year from the date of receipt, and avoid repeat freeze-thaw cycles.

### TARGET INFORMATION

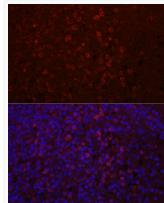
Gene ID	<a href="#">920</a>
Gene Symbol	<a href="#">CD4</a>
UniProt ID	<a href="#">CD4_HUMAN</a>
Immunogen Region	26-200
Immunogen Sequence	KKVVLGKKGDTVELTCTASQ KKSIFHWKNSNQIKILGNQ GSFLTGKPSKLNDRADSRRS LWDQGNFPLIKNLKIEDSD TYICEVEDQKEEVQLLVFGL TANSDTHLLQGQSLTLTLES PPGSSPSVQCRSPRGKNIQG GKTLSSVSQLELQDSGTWTCT VLQNKQKVEFKIDIV
Specificity	Recombinant fusion protein containing a sequence corresponding to amino acids 26-207 of CD4 (NP_000607.1).

### ADDITIONAL INFORMATION

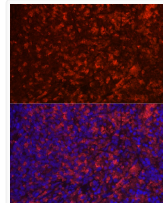
Note **STRICTLY FOR FURTHER SCIENTIFIC RESEARCH USE ONLY (RUO). MUST NOT TO BE USED IN DIAGNOSTIC OR THERAPEUTIC APPLICATIONS.**



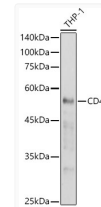
Immunofluorescence analysis of paraffin-embedded mouse spleen using CD4 Rabbit polyclonal antibody (STJ114879) at dilution of 1:100 (40x lens). Secondary antibody: Cy3 Goat Anti-Rabbit IgG (H+L) at 1:500 dilution. Blue: DAPI for nuclear staining.



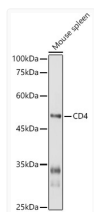
Immunofluorescence analysis of paraffin-embedded human spleen using CD4 Rabbit polyclonal antibody (STJ114879) at dilution of 1:100 (40x lens). Secondary antibody: Cy3 Goat Anti-Rabbit IgG (H+L) at 1:500 dilution. Blue: DAPI for nuclear staining.



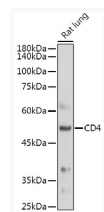
Immunofluorescence analysis of paraffin-embedded rat spleen using CD4 Rabbit polyclonal antibody (STJ114879) at dilution of 1:100 (40x lens). Secondary antibody: Cy3 Goat Anti-Rabbit IgG (H+L) at 1:500 dilution. Blue: DAPI for nuclear staining.



Western blot analysis of lysates from THP-1 cells, using CD4 Rabbit polyclonal antibody (STJ114879) at 1:1000 dilution. Secondary antibody: HRP Goat Anti-Rabbit IgG (H+L) (STJS000856) at 1:10000 dilution. Lysates/proteins: 25 Mu g per lane. Blocking buffer: 3% nonfat dry milk in TBST. Detection: ECL Basic Kit. Exposure time: 10s.



Western blot analysis of lysates from Mouse spleen, using CD4 Rabbit polyclonal antibody (STJ114879) at 1:1000 dilution. Secondary antibody: HRP Goat Anti-Rabbit IgG (H+L) (STJS000856) at 1:10000 dilution. Lysates/proteins: 25 Mu g per lane. Blocking buffer: 3% nonfat dry milk in TBST. Detection: ECL Basic Kit. Exposure time: 180s.



Western blot analysis of lysates from Rat lung, using CD4 Rabbit polyclonal antibody (STJ114879) at 1:500 dilution. Secondary antibody: HRP Goat Anti-Rabbit IgG (H+L) (STJS000856) at 1:10000 dilution. Lysates/proteins: 25 Mu g per lane. Blocking buffer: 3% nonfat dry milk in TBST. Detection: ECL Basic Kit. Exposure time: 180s.