

Anti-CD4 antibody (26-200) (STJ114878)

GENERAL INFORMATION

Product Type	Primary antibodies
Applications	WB/IF/ICC/ELISA
Host / Source	Rabbit
Reactivity	Human/Mouse/Rat

PRODUCT PROPERTIES

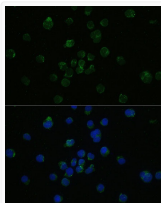
Clonality	Polyclonal
Concentration	Lot specific
Conjugation	Unconjugated
Purification	Affinity purification
Dilution Range	WB:1:500-1:2000 IF/CC:1:50-1:200 ELISA:Recommended starting concentration is 1 Mu g/mL. Please optimize the concentration based on your specific assay requirements.
Formulation	PBS with 0.09% Sodium Azide, 50% Glycerol, pH 7.3.
Isotype	IgG
Molecular Weight	Protein Mw: 51kDa Observed Mw: 51kDa
Storage Instruction	Store at -20°C for up to 1 year from the date of receipt, and avoid repeat freeze-thaw cycles.

TARGET INFORMATION

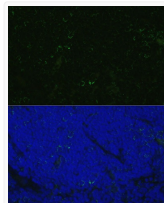
Gene ID	920
Gene Symbol	CD4
UniProt ID	CD4_HUMAN
Immunogen Region	26-200
Immunogen Sequence	KKVVLGKKGDTVELTCTASQ KKSQFHWKNSNQIKILGNQ GSFLTGKPSKLNDRADSRRS LWDQGNFPLIKNLKIETSD TYICEVEDQKEEVQLLVFGL TANSDTHLLQGQSLTLTLES PPGSSPSVQCRSPRGKNIQG GKTLSSVSQLELQDSGTWTCT VLQNQKQKVEFKIDIV
Specificity	Recombinant fusion protein containing a sequence corresponding to amino acids 26-200 of human CD4 (NP_000607.1).

ADDITIONAL INFORMATION

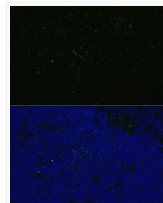
Note **STRICTLY FOR FURTHER SCIENTIFIC RESEARCH USE ONLY (RUO). MUST NOT TO BE USED IN DIAGNOSTIC OR THERAPEUTIC APPLICATIONS.**



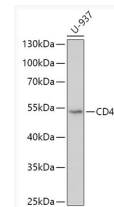
Immunofluorescence analysis of Jurkat cells using CD4 Rabbit polyclonal antibody (STJ114878) at dilution of 1:100. Blue: DAPI for nuclear staining.



Immunofluorescence analysis of Rat thymus cells using CD4 Rabbit polyclonal antibody (STJ114878) at dilution of 1:100. Blue: DAPI for nuclear staining.



Immunofluorescence analysis of Mouse thymus using CD4 Rabbit polyclonal antibody (STJ114878) at dilution of 1:100. Blue: DAPI for nuclear staining.



Western blot analysis of lysates from U-937 cells, using CD4 Rabbit polyclonal antibody (STJ114878) at 1:500 dilution. Secondary antibody: HRP Goat Anti-Rabbit IgG (H+L) (STJS000856) at 1:10000 dilution. Lysates/proteins: 25 Mu g per lane. Blocking buffer: 3% nonfat dry milk in TBST. Detection: ECL Basic Kit. Exposure time: 30s.