

Anti-RAD50 antibody (1-270) (STJ114873)

GENERAL INFORMATION

Product Type	Primary antibodies
Applications	WB/IHC-P/ELISA
Host / Source	Rabbit
Reactivity	Human/Mouse

PRODUCT PROPERTIES

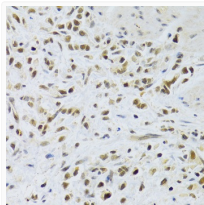
Clonality	Polyclonal
Concentration	Lot specific
Conjugation	Unconjugated
Purification	Affinity purification
Dilution Range	WB:1:500-1:2000 IHC-P:1:50-1:100 ELISA:Recommended starting concentration is 1 µg/mL. Please optimize the concentration based on your specific assay requirements.
Formulation	PBS with 0.02% Sodium Azide, 50% Glycerol, pH 7.3.
Isotype	IgG
Molecular Weight	Protein Mw: 154kDa Observed Mw: 180kDa
Storage Instruction	Store at -20°C for up to 1 year from the date of receipt, and avoid repeat freeze-thaw cycles.

TARGET INFORMATION

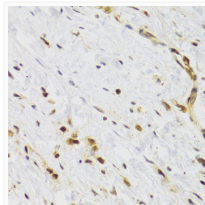
Gene ID	10111
Gene Symbol	RAD50
UniProt ID	RAD50_HUMAN
Immunogen Region	1-270
Immunogen Sequence	MSRIEKMSILGVRSFGIEDK DKQIITFFSPLTILVGPNGA GKTTIIECLKYICTGDFPPG TKGNTFVHDPKVAQETDVRA QIRLQFRDVGELIAVQRSM VCTQKSKKTEFKTLEGVITR TKHGEKVSLSKCAEIDREM ISSLGVSKAVLNNVIFCHQE DSNWPLSEGKALKQKQFDEIF SATRYIKALETLRQVRQTQG QKVKEYQMEKYLKQYKEKA CEIRDQITSKEAQLTSSKE
Specificity	A synthetic peptide corresponding to a sequence within amino acids 1-270 of human Rad50 (NP_005723.2).

ADDITIONAL INFORMATION

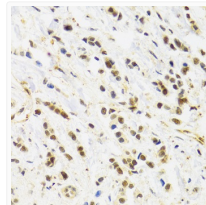
Note **STRICTLY FOR FURTHER SCIENTIFIC RESEARCH USE ONLY (RUO). MUST NOT TO BE USED IN DIAGNOSTIC OR THERAPEUTIC APPLICATIONS.**



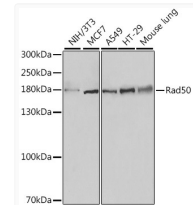
Immunohistochemistry analysis of paraffin-embedded human gastric cancer using Rad50 Antibody (STJ114873) at dilution of 1:100 (40x lens). Perform microwave antigen retrieval with 10 mM PBS buffer pH 7.2 before commencing with immunohistochemistry staining protocol.



Immunohistochemistry analysis of paraffin-embedded human stomach using Rad50 Antibody (STJ114873) at dilution of 1:100 (40x lens). Perform microwave antigen retrieval with 10 mM PBS buffer pH 7.2 before commencing with immunohistochemistry staining protocol.



Immunohistochemistry analysis of paraffin-embedded human breast cancer using Rad50 Antibody (STJ114873) at dilution of 1:100 (40x lens). Perform microwave antigen retrieval with 10 mM PBS buffer pH 7.2 before commencing with immunohistochemistry staining protocol.



Western blot analysis of extracts of various cell lines, using Rad50 antibody (STJ114873) at 1:500 dilution. Secondary antibody: HRP Goat Anti-Rabbit IgG (H+L) (STJS000856) at 1:10000 dilution. Lysates/proteins: 25 µg per lane. Blocking buffer: 3% nonfat dry milk in TBST. Detection: ECL Enhanced Kit. Exposure time: 10s.