

Anti-SEMA3A antibody (300-400) (STJ114833)

GENERAL INFORMATION

Product Type	Primary antibodies
Applications	WB/ELISA
Host / Source	Rabbit
Reactivity	Mouse/Rat

PRODUCT PROPERTIES

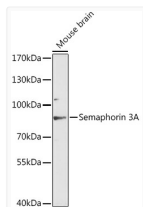
Clonality	Polyclonal
Concentration	Lot specific
Conjugation	Unconjugated
Purification	Affinity purification
Dilution Range	WB:1:500-1:1000 ELISA:Recommended starting concentration is 1 Mu g/mL. Please optimize the concentration based on your specific assay requirements.
Formulation	PBS with 0.01% Thimerosal, 50% Glycerol, pH 7.3.
Isotype	IgG
Molecular Weight	Protein Mw: 89kDa Observed Mw: 89kDa
Storage Instruction	Store at -20°C for up to 1 year from the date of receipt, and avoid repeat freeze-thaw cycles.

TARGET INFORMATION

Gene ID	10371
Gene Symbol	SEMA3A
UniProt ID	SEM3A_HUMAN
Immunogen Region	300-400
Immunogen Sequence	GIDTHFDELQDVFLMNFKDP KNPVVYGVFTTSSNIFKGSV VCMYMSDVRVFLGPHYAHR DGPNYQWVPYQGRVYPRPG TCPSKTFGGFDSTKDLRDDV I
Specificity	A synthetic peptide corresponding to a sequence within amino acids 300-400 of human Semaphorin 3A (NP_006071.1).

ADDITIONAL INFORMATION

Note STRICTLY FOR FURTHER SCIENTIFIC RESEARCH USE ONLY (RUO). MUST NOT TO BE USED IN DIAGNOSTIC OR THERAPEUTIC APPLICATIONS.



Western blot analysis of lysates from mouse brain, using Semaphorin 3A Rabbit polyclonal antibody (STJ114833) at 1:3000 dilution. Secondary antibody: HRP Goat Anti-Rabbit IgG (H+L) (STJS000856) at 1:10000 dilution. Lysates/proteins: 25 Mu g per lane. Blocking buffer: 3% nonfat dry milk in TBST. Detection: ECL Enhanced Kit. Exposure time: 90s.