

Anti-MYH6 antibody (1-250) (STJ114830)

GENERAL INFORMATION

Product Type	Primary antibodies
Applications	WB/IF/ICC/ELISA
Host / Source	Rabbit
Reactivity	Mouse/Rat

PRODUCT PROPERTIES

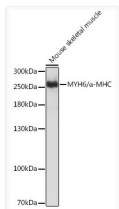
Clonality	Polyclonal
Concentration	Lot specific
Conjugation	Unconjugated
Purification	Affinity purification
Dilution Range	WB:1:1000-1:2000 IF/CC:1:50-1:200 ELISA:Recommended starting concentration is 1 μ g/mL. Please optimize the concentration based on your specific assay requirements.
Formulation	PBS with 0.09% Sodium Azide, 50% Glycerol, pH7.3.
Isotype	IgG
Molecular Weight	Protein Mw: 224kDa Observed Mw: 250kDa
Storage Instruction	Store at -20°C for up to 1 year from the date of receipt, and avoid repeat freeze-thaw cycles.

TARGET INFORMATION

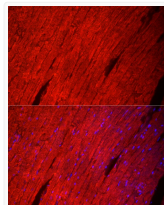
Gene ID	4624
Gene Symbol	MYH6
UniProt ID	MYH6_HUMAN
Immunogen Region	1-250
Immunogen Sequence	MTDAQMADFGAAQYLRKSE KERLEAQTRPFDIRTECFVP DDKEEFVKAKILSREGGKVI AETENGKTVTVKEDQVLQQN PPKFDKIEDMAMLTFLHEPA VLFNLKERYAAWMIYTYGL FCVTVNPNYKWLVPYNAEVVA AYRGKKRSEAPPHIFSISDN AYQYMLTDRENQSILITGES GAGKTVNTRVVIQYFASIAA IGDGKKNANANKGTLEDQ IIQANPALEAFGNAKTVRN
Specificity	Recombinant fusion protein containing a sequence corresponding to amino acids 1-250 of human MYH6/Alpha-MHC (NP_002462.2).

ADDITIONAL INFORMATION

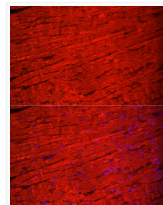
Note STRICTLY FOR FURTHER SCIENTIFIC RESEARCH USE ONLY (RUO). MUST NOT TO BE USED IN DIAGNOSTIC OR THERAPEUTIC APPLICATIONS.



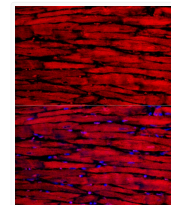
Western blot analysis of extracts of mouse skeletal muscle, using MYH6/Alpha-MHC rabbit polyclonal antibody (STJ114830) at 1:3000 dilution. Secondary antibody: HRP Goat Anti-rabbit IgG (H+L) (STJS000856) at 1:10000 dilution. Lysates/proteins: 25 μ g per lane. Blocking buffer: 3% non-fat dry milk in TBST. Detection: ECL Basic Kit. Exposure time: 5s.



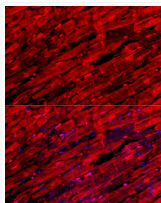
Immunofluorescence analysis of mouse heart cells using MYH6/Alpha-MHC rabbit polyclonal antibody (STJ114830) at dilution of 1:50 (40x lens). Blue: DAPI for nuclear staining.



Immunofluorescence analysis of rat heart cells using MYH6/Alpha-MHC rabbit polyclonal antibody (STJ114830) at dilution of 1:50 (40x lens). Blue: DAPI for nuclear staining.



Immunofluorescence analysis of mouse heart cells using MYH6/Alpha-MHC rabbit polyclonal antibody (STJ114830) at dilution of 1:100 (40x lens). Blue: DAPI for nuclear staining.



Immunofluorescence analysis of rat heart cells using MYH6/Alpha-MHC rabbit polyclonal antibody (STJ114830) at dilution of 1:100 (40x lens). Blue: DAPI for nuclear staining.