

Anti-MST1 antibody (200-500) (STJ114829)

GENERAL INFORMATION

Product Type	Primary antibodies
Applications	WB/IHC-P/IF/ICC/ELISA
Host / Source	Rabbit
Reactivity	Human/Mouse/Rat

PRODUCT PROPERTIES

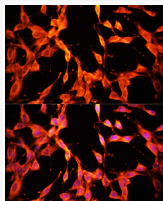
Clonality	Polyclonal
Concentration	Lot specific
Conjugation	Unconjugated
Purification	Affinity purification
Dilution Range	WB:1:500-1:2000 IHC-P:1:50-1:200 IF/ICC:1:50-1:200 ELISA:Recommended starting concentration is 1 μ g/mL. Please optimize the concentration based on your specific assay requirements.
Formulation	PBS with 0.01% Thimerosal, 50% Glycerol, pH 7.3.
Isotype	IgG
Molecular Weight	Protein Mw: 80kDa Observed Mw: 100kDa
Storage Instruction	Store at -20°C for up to 1 year from the date of receipt, and avoid repeat freeze-thaw cycles.

TARGET INFORMATION

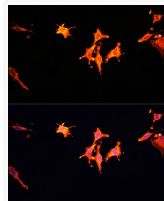
Gene ID	4485
Gene Symbol	MST1
UniProt ID	HGFL_HUMAN
Immunogen Region	200-500
Immunogen Sequence	CREAACVWCNGEERYGAVDR TESGRECQRWDLQHPHQHPF EPGKFLDQGLDDNYCRNPDG SERPWCYTTDPQIEREFCDL PRCGSEAQPRQEATTVSCFR GKGEYRGTANTTTAGVPCQ RWDAQIPHQRHFTPEKYACK DLRENFRCRNPDGSEAPWCFT LRPGMRAAFQYQIRRCTDDV RPQDCYHGAGEQYRGTVSKT RKGVCQCRWSAETPHKPQFT FTSEPHAQLEENFCRNPDG
Specificity	Recombinant fusion protein containing a sequence corresponding to amino acids 200-500 of human MSP/MST1 (NP_066278.3).

ADDITIONAL INFORMATION

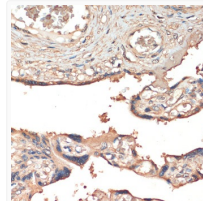
Note **STRICTLY FOR FURTHER SCIENTIFIC RESEARCH USE ONLY (RUO). MUST NOT TO BE USED IN DIAGNOSTIC OR THERAPEUTIC APPLICATIONS.**



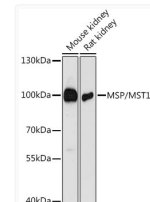
Immunofluorescence analysis of NIH/3T3 cells using MSP/MST1 Rabbit polyclonal antibody (STJ114829) at dilution of 1:100. Secondary antibody: Cy3 Goat Anti-Rabbit IgG (H+L) at 1:500 dilution. Blue: DAPI for nuclear staining.



Immunofluorescence analysis of C6 cells using MSP/MST1 Rabbit polyclonal antibody (STJ114829) at dilution of 1:100. Secondary antibody: Cy3 Goat Anti-Rabbit IgG (H+L) at 1:500 dilution. Blue: DAPI for nuclear staining.



Immunohistochemistry analysis of MSP/MST1 in paraffin-embedded human placenta using MSP/MST1 Rabbit polyclonal antibody (STJ114829) at dilution of 1:200 (40x lens). Perform microwave antigen retrieval with 10 mM PBS buffer pH 7.2 before commencing with immunohistochemistry staining protocol.



Western blot analysis of various lysates using MSP/MST1 Rabbit polyclonal antibody (STJ114829) at 1:3000 dilution. Secondary antibody: HRP Goat Anti-Rabbit IgG (H+L) (STJS000856) at 1:10000 dilution. Lysates/proteins: 25 μ g per lane. Blocking buffer: 3% nonfat dry milk in TBST. Detection: ECL Basic Kit. Exposure time: 90s.