

Anti-PGK2 antibody (242-360) (STJ114818)

GENERAL INFORMATION

Product Type	Primary antibodies
Applications	WB/IHC-P/IF/ICC/ELISA
Host / Source	Rabbit
Reactivity	Human/Mouse/Rat

PRODUCT PROPERTIES

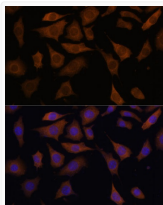
Clonality	Polyclonal
Concentration	Lot specific
Conjugation	Unconjugated
Purification	Affinity purification
Dilution Range	WB:1:500-1:2000 IHC-P:1:50-1:100 IF/CC:1:50-1:100 ELISA:Recommended starting concentration is 1 µg/mL. Please optimize the concentration based on your specific assay requirements.
Formulation	PBS with 0.01% Thimerosal, 50% Glycerol, pH 7.3.
Isotype	IgG
Molecular Weight	Protein Mw: 45kDa Observed Mw: 45kDa
Storage Instruction	Store at -20°C for up to 1 year from the date of receipt, and avoid repeat freeze-thaw cycles.

TARGET INFORMATION

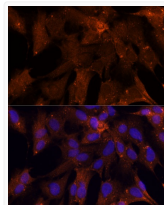
Gene ID	5232
Gene Symbol	PGK2
UniProt ID	PGK2_HUMAN
Immunogen Region	242-360
Immunogen Sequence	YTLFLKVLNNMEIGASLFDDEE GAKIVKDIMAKAQKNGVRIT FPVDFVTGDKFDENAQVGKA TVASGISPGWVMGLDCGPESN KNHAQVVAQARLIVWNGPLG VFEWDAFAKGTKALMDEIV
Specificity	Recombinant fusion protein containing a sequence corresponding to amino acids 242-360 of human PGK2 (NP_620061.2).

ADDITIONAL INFORMATION

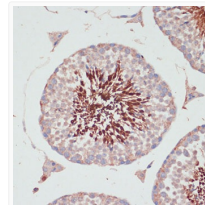
Note **STRICTLY FOR FURTHER SCIENTIFIC RESEARCH USE ONLY (RUO). MUST NOT TO BE USED IN DIAGNOSTIC OR THERAPEUTIC APPLICATIONS.**



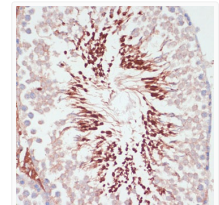
Immunofluorescence analysis of L929 cells using PGK2 Rabbit polyclonal antibody (STJ114818) at dilution of 1:100 (40x lens). Secondary antibody: Cy3 Goat Anti-Rabbit IgG (H+L) at 1:500 dilution. Blue: DAPI for nuclear staining.



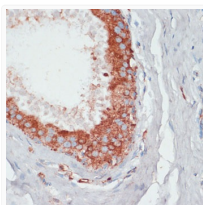
Immunofluorescence analysis of C6 cells using PGK2 Rabbit polyclonal antibody (STJ114818) at dilution of 1:100 (40x lens). Secondary antibody: Cy3 Goat Anti-Rabbit IgG (H+L) at 1:500 dilution. Blue: DAPI for nuclear staining.



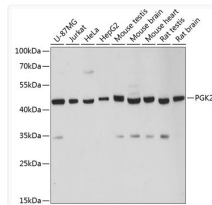
Immunohistochemistry analysis of PGK2 in paraffin-embedded mouse testis using PGK2 Rabbit polyclonal antibody (STJ114818) at dilution of 1:100 (40x lens). Perform microwave antigen retrieval with 10 mM PBS buffer pH 7. 2 before commencing with immunohistochemistry staining protocol.



Immunohistochemistry analysis of PGK2 in paraffin-embedded rat testis using PGK2 Rabbit polyclonal antibody (STJ114818) at dilution of 1:100 (40x lens). Perform microwave antigen retrieval with 10 mM PBS buffer pH 7. 2 before commencing with immunohistochemistry staining protocol.



Immunohistochemistry analysis of PGK2 in paraffin-embedded human mammary cancer using PGK2 Rabbit polyclonal antibody (STJ114818) at dilution of 1:100 (40x lens). Perform microwave antigen retrieval with 10 mM PBS buffer pH 7. 2 before commencing with immunohistochemistry staining protocol.



Western blot analysis of various lysates using PGK2 Rabbit polyclonal antibody (STJ114818) at 1:3000 dilution. Secondary antibody: HRP Goat Anti-Rabbit IgG (H+L) (STJS000856) at 1:10000 dilution. Lysates/proteins: 25 µg per lane. Blocking buffer: 3% nonfat dry milk in TBST. Detection: ECL Basic Kit. Exposure time: 5s.